

Piedmont Cancer Registry
City of Turin (899.806 residents at the 2001 census)

BLADDER - ICD-10: C 67

COMMENTS:

Incidence is slightly increasing in both sexes.
Mortality slowly goes down in men, and it is stable in women. Trends in survival are in part an artefact, due to the change in malignancy definition, as the parallel decrease in mortality in men clearly shows.

INCIDENCE Last Update: 2003-2005

		MEN	WOMEN
N° (average/annual)		402	100
RATES	Crude	93.0	21.3
	Age adj (ITA81)	57.4	13.1
	Age adj (WORLD)	39.8	7.1

MORTALITY Last Update: 2003-2005

		MEN	WOMEN
N° (average/annual)		90	28
RATES	Crude	20.9	6.0
	Age adj (ITA81)	11.3	3.1
	Age adj (WORLD)	7.3	1.4

SURVIVAL Last Update: 1995-1999 (f.u. 2004)

	MEN	WOMEN
N° of cases	949	252
1 year observed	79.8	74.6
1 year relative	83.5	77.5
5 year observed	52.7	45.3
5 year relative	67.0	56.3
5 year standardized	67.0	61.0

SURVIVAL Complete data: 1985-1999 (f.u. 2004)

	MEN	WOMEN
N° of cases	3619	928
10 year observed	38.7	36.9
10 year relative	62.4	58.8
15 year observed	26.9	26.2
15 year relative	57.9	55.4

5 year Relative Survival TRENDS (f.u. 2004)

	MEN	WOMEN
1985-1987	72.0	58.4
1988-1990	70.8	74.1
1991-1993	70.9	72.8
1994-1996	67.6	56.9
1997-1999	66.8	56.0

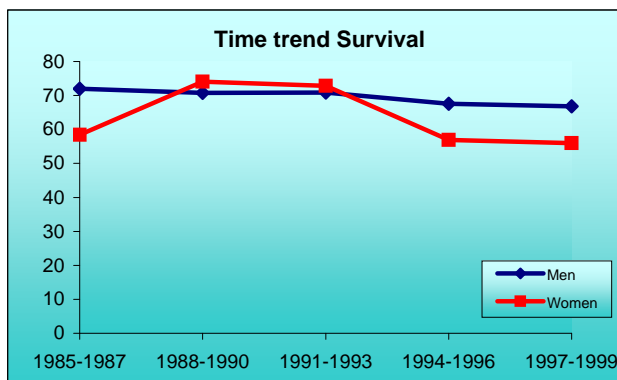
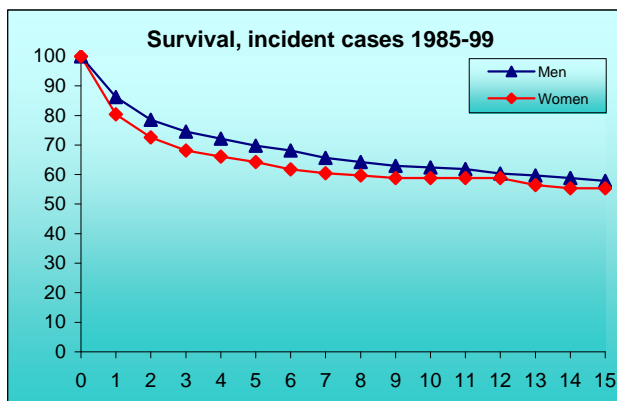
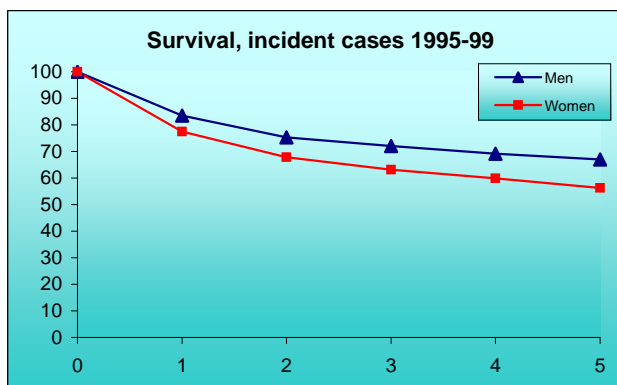
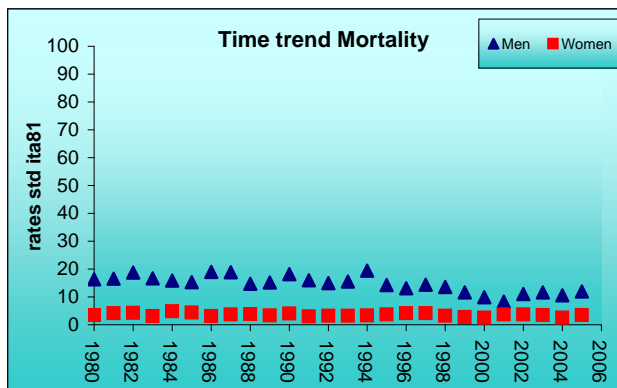
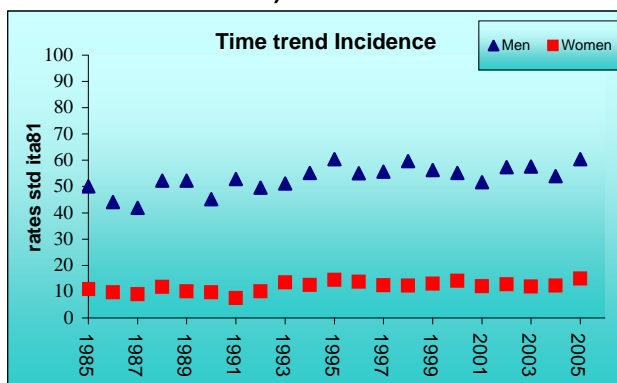
PREVALENCE 31/12/2004

N° of cases x 100.000

	MEN	WOMEN
observed (since 1985)	386.3	84.4
overall (estimated)	456.8	100.6

INDICATORS / METHODS

INCIDENCE - MORTALITY - NUMBER OF CASES
AGE SPECIFIC RATES - CRUDE RATES - STANDARDIZED RATES
- SURVIVAL - OBSERVED SURVIVAL
RELATIVE SURVIVAL AND AGE-STANDARDIZED RELATIVE SURVIVAL - PREVALENCE - NOTES



[PREVIOUS](#)

[HOME](#)

[LIST](#)

[NEXT](#)