

Piedmont Cancer Registry

City of Turin (899.806 residents at the 2001 census)

CERVIX UTERI - ICD-10: C 53

COMMENTS:

Incidence rate keeps going down, while the mortality is stable at a very low level. This is a clear effect of the mass screening. Survival of invasive cases does not seem to improve over time.

INCIDENCE Last Update: 2003-2005

		WOMEN
N° (average/annual)		37
RATES	Crude	7.9
	Age adj (ITA81)	5.8
	Age adj (WORLD)	4.1

MORTALITY Last Update: 2003-2005 (see notes)

		WOMEN
N° (average/annual)		11
RATES	Crude	2.3
	Age adj (ITA81)	1.6
	Age adj (WORLD)	1.1

SURVIVAL Last Update: 1995-1999 (f.u. 2004)

		WOMEN
N° of cases		262
1 year observed		84.0
1 year relative		85.2
5 year observed		49.6
5 year relative		53.8
5 year standardized		55.0

SURVIVAL Complete data: 1985-1999 (f.u. 2004)

		WOMEN
N° of cases		1068
10 year observed		45.8
10 year relative		55.7
15 year observed		41.4
15 year relative		55.7

5 year Relative Survival TRENDS (f.u. 2004)

		WOMEN
1985-1987		63.3
1988-1990		55.6
1991-1993		61.8
1994-1996		58.8
1997-1999		52.6

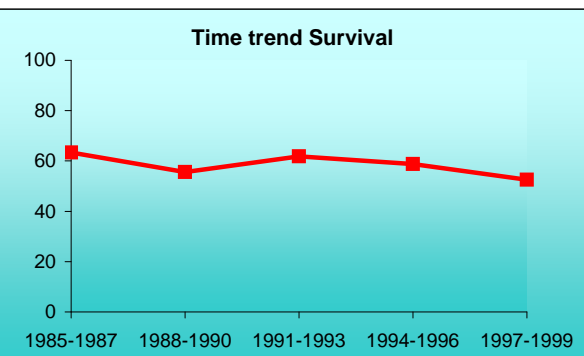
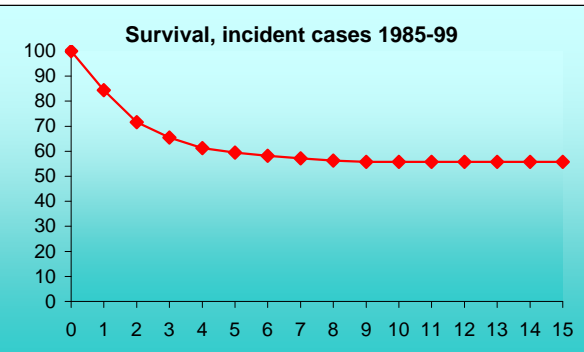
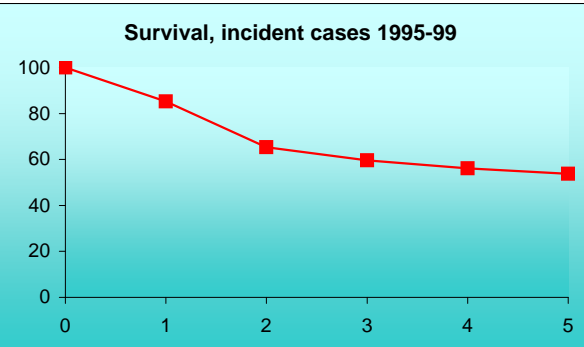
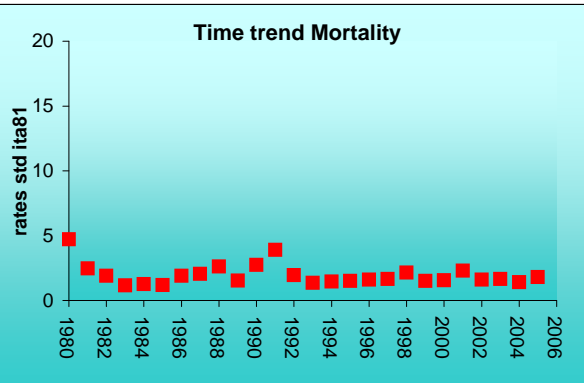
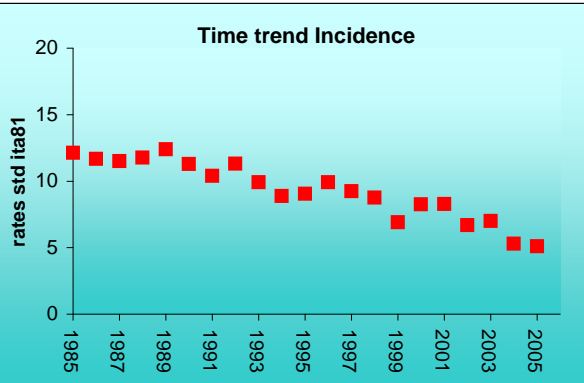
PREVALENCE 31/12/2004

N° of cases x 100.000

		WOMEN
observed (since 1985)		104.6
overall (estimated)		182.8

INDICATORS / METHODS

INCIDENCE - MORTALITY - NUMBER OF CASES - AGE SPECIFIC RATES - CRUDE RATES - STANDARDIZED RATES - SURVIVAL - OBSERVED SURVIVAL - RELATIVE SURVIVAL AND AGE-STANDARDIZED RELATIVE SURVIVAL - PREVALENCE - NOTES



[PREVIOUS](#)

[HOME](#)

[LIST](#)

[NEXT](#)