

Piedmont Cancer Registry City of Turin (899.806 residents at the 2001 census)

C.N.S. - ICD-10: C 70-72

COMMENTS:

Both incidence and mortality seem to be stable.
Survival remains poor and does not increase over the observed period.

INCIDENCE Last Update: 2003-2005

		MEN	WOMEN
N° (average/annual)		45	44
RATES	Crude	10.4	9.4
	Age adj (ITA81)	8.0	7.1
	Age adj (WORLD)	6.7	5.3

MORTALITY Last Update: 2003-2005

		MEN	WOMEN
N° (average/annual)		28	27
RATES	Crude	6.4	5.8
	Age adj (ITA81)	4.5	4.0
	Age adj (WORLD)	3.7	2.7

SURVIVAL Last Update: 1995-1999 (f.u. 2004)

	MEN	WOMEN
N° of cases	195	188
1 year observed	37.4	31.7
1 year relative	38.2	32.4
5 year observed	14.3	12.3
5 year relative	16.1	13.8
5 year standardized	20.0	18.0

SURVIVAL Complete data: 1985-1999 (f.u. 2004)

	MEN	WOMEN
N° of cases	658	559
10 year observed	11.0	10.8
10 year relative	13.8	13.7
15 year observed	9.2	9.1
15 year relative	13.1	13.3

5 year Relative Survival TRENDS (f.u. 2004)

	MEN	WOMEN
1985-1987	14.4	17.9
1988-1990	12.4	7.1
1991-1993	13.8	20.9
1994-1996	11.2	13.0
1997-1999	15.2	12.3

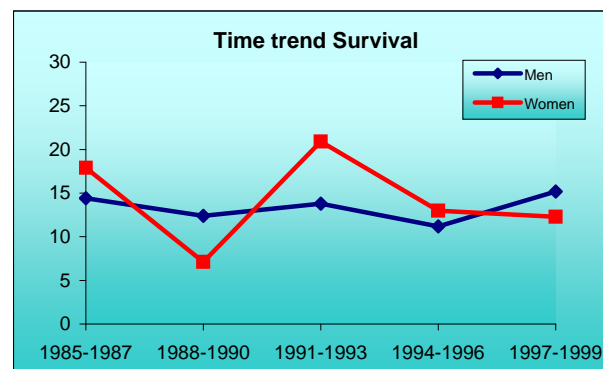
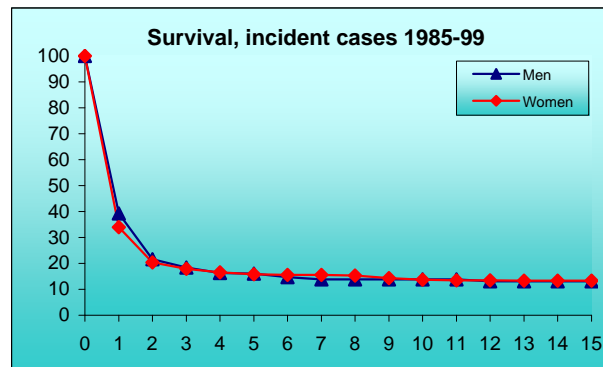
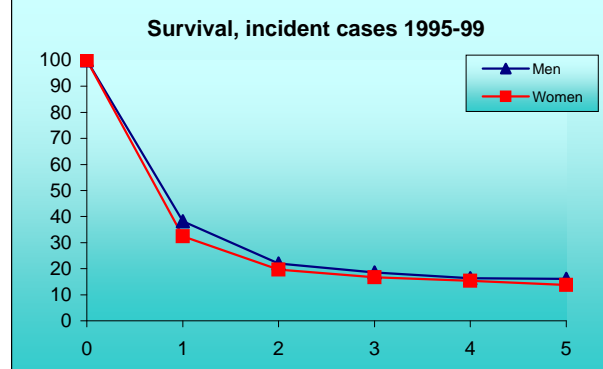
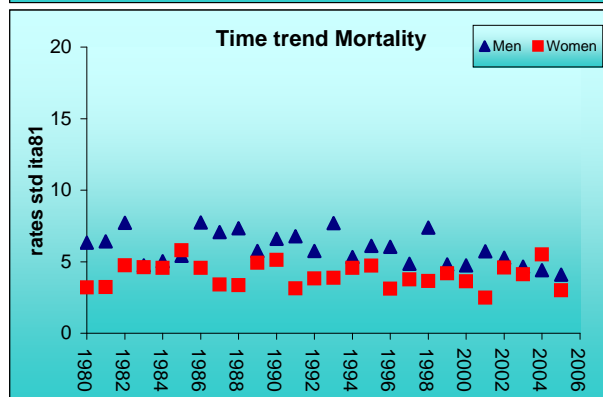
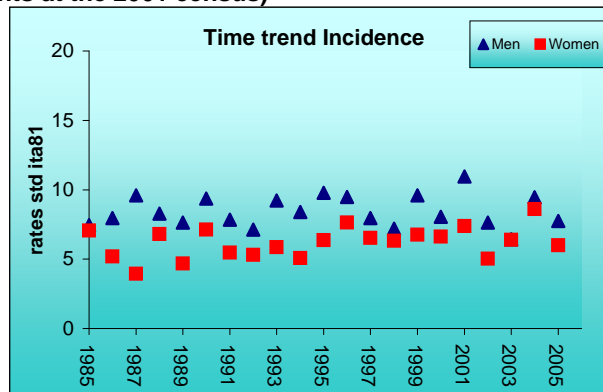
PREVALENCE 31/12/2004

N° of cases x 100.000

	MEN	WOMEN
observed (since 1985)	37.3	27.2
overall (estimated)	50.1	33.7

INDICATORS / METHODS

INCIDENCE - MORTALITY - NUMBER OF CASES
AGE SPECIFIC RATES - CRUDE RATES - STANDARDIZED RATES -
SURVIVAL - OBSERVED SURVIVAL
RELATIVE SURVIVAL AND AGE-STANDARDIZED RELATIVE
SURVIVAL - PREVALENCE - NOTES



[PREVIOUS](#)

[HOME](#)

[LIST](#)

[NEXT](#)