

Piedmont Cancer Registry

City of Turin (899.806 residents at the 2001 census)

GALLBLADDER AND BILIARY TRACT - ICD-10: C 23-24

COMMENTS:

Incidence and mortality are very close in values and stable during the recent years in both sexes. Survival is still at a very low level.

INCIDENCE Last Update: 2003-2005

		MEN	WOMEN
N° (average/annual)		39	53
RATES	Crude	9.0	11.2
	Age adj (ITA81)	5.3	6.2
	Age adj (WORLD)	3.6	2.9

MORTALITY Last Update: 2003-2005

		MEN	WOMEN
N° (average/annual)		32	43
RATES	Crude	7.3	9.1
	Age adj (ITA81)	4.2	5.0
	Age adj (WORLD)	2.9	2.2

SURVIVAL Last Update: 1995-1999 (f.u. 2004)

	MEN	WOMEN
N° of cases	171	288
1 year observed	27.5	27.4
1 year relative	28.9	28.8
5 year observed	8.8	11.1
5 year relative	10.8	14.4
5 year standardized	16,0 (M & W)	

SURVIVAL Complete data: 1985-1999 (f.u. 2004)

	MEN	WOMEN
N° of cases	506	844
10 year observed	5.0	6.0
10 year relative	8.7	9.4
15 year observed	4.6	3.7
15 year relative	8.6	8.5

5 year Relative Survival TRENDS (f.u. 2004)

	MEN	WOMEN
1985-1987	7.6	9.0
1988-1990	13.7	5.5
1991-1993	7.6	2.6
1994-1996	9.4	10.5
1997-1999	12.5	16.4

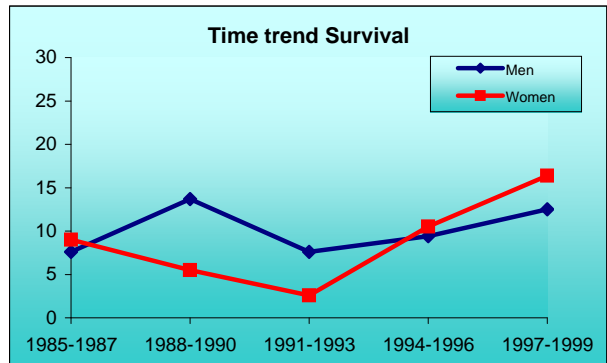
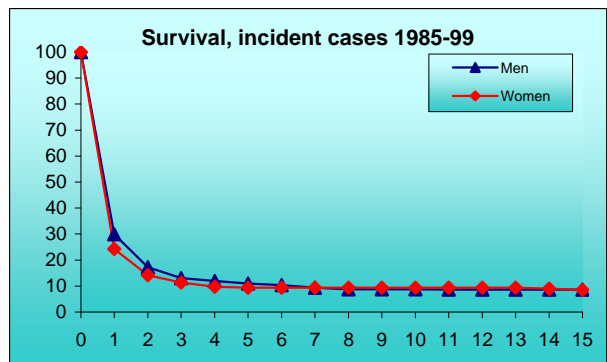
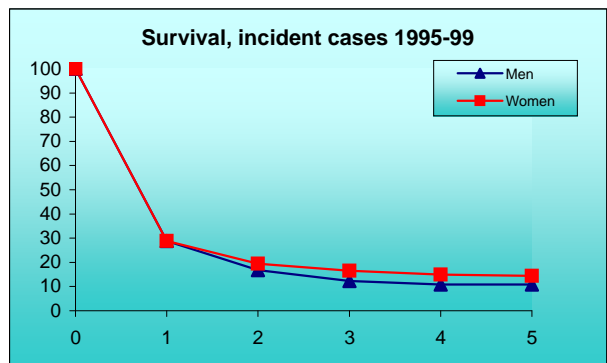
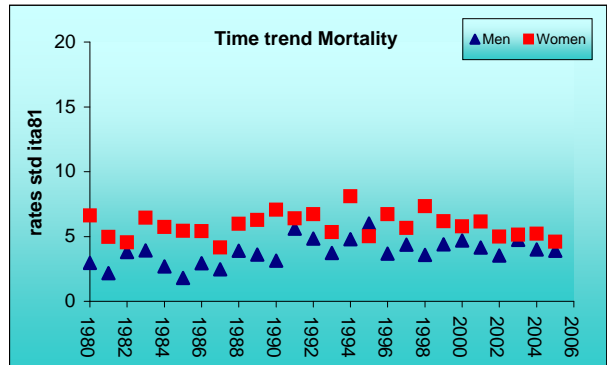
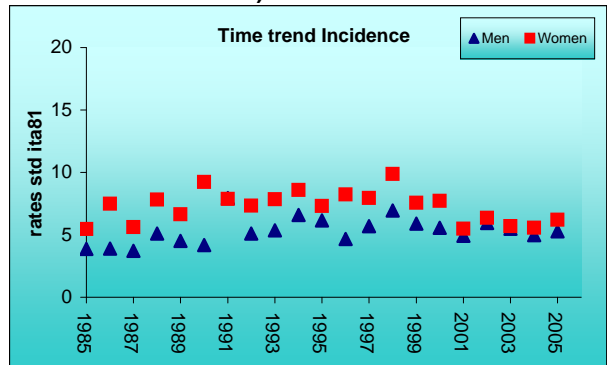
PREVALENCE 31/12/2004

N° of cases x 100.000

	MEN	WOMEN
observed	15.3	19.6
expected	15.7	20.2

INDICATORS / METHODS

INCIDENCE - MORTALITY - NUMBER OF CASES
AGE SPECIFIC RATES - CRUDE RATES - STANDARDIZED RATES -
SURVIVAL - OBSERVED SURVIVAL
RELATIVE SURVIVAL AND AGE-STANDARDIZED RELATIVE SURVIVAL -
PREVALENCE - NOTES



[PREVIOUS](#)

[HOME](#)

[LIST](#)

[NEXT](#)