

Piedmont Cancer Registry

City of Turin (899.806 residents at the 2001 census)

KIDNEY - ICD-10: C 64

COMMENTS:

Overall incidence is stable in both sexes, apart from a recent decrease in males, and mortality does not show a clear pattern. Survival is improving in both sexes.

INCIDENCE Last Update: 2003-2005

		MEN	WOMEN
N° (average/annual)		86	43
RATES	Crude	19.8	9.2
	Age adj (ITA81)	13.6	6.3
	Age adj (WORLD)	10.2	4.3

MORTALITY Last Update: 2003-2005

		MEN	WOMEN
N° (average/annual)		40	22
RATES	Crude	9.2	4.6
	Age adj (ITA81)	5.4	2.7
	Age adj (WORLD)	3.7	1.4

SURVIVAL Last Update: 1995-1999 (f.u. 2004)

		MEN	WOMEN
N° of cases		339	188
1 year observed		80.5	77.1
1 year relative		83.2	79.2
5 year observed		63.4	63.1
5 year relative		74.3	72.8
5 year standardized		70.0	71.0

SURVIVAL Complete data: 1985-1999 (f.u. 2004)

		MEN	WOMEN
N° of cases		1055	565
10 year observed		40.8	45.4
10 year relative		58.9	62.6
15 year observed		31.6	36.8
15 year relative		55.9	60.3

5 year Relative Survival TRENDS (f.u. 2004)

	MEN	WOMEN
1985-1987	41.2	45.7
1988-1990	65.7	54.0
1991-1993	63.6	73.9
1994-1996	62.5	65.9
1997-1999	79.6	73.8

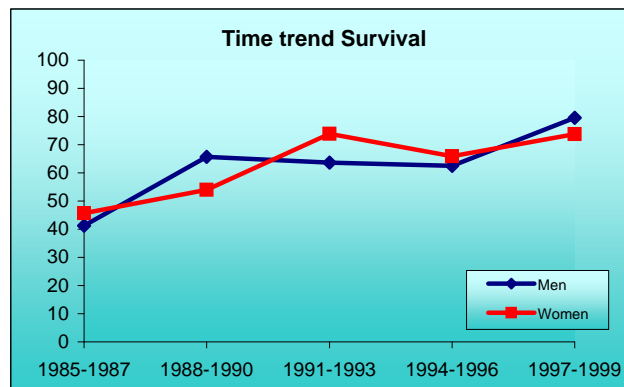
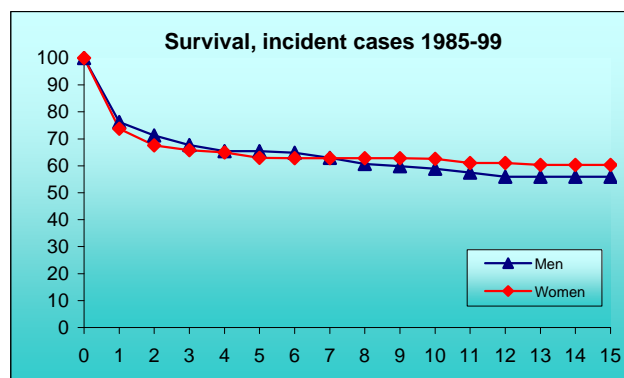
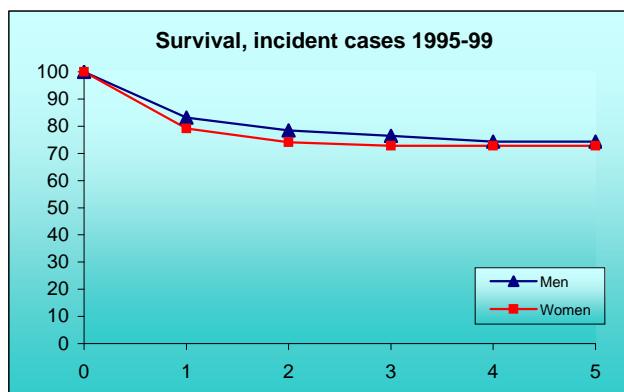
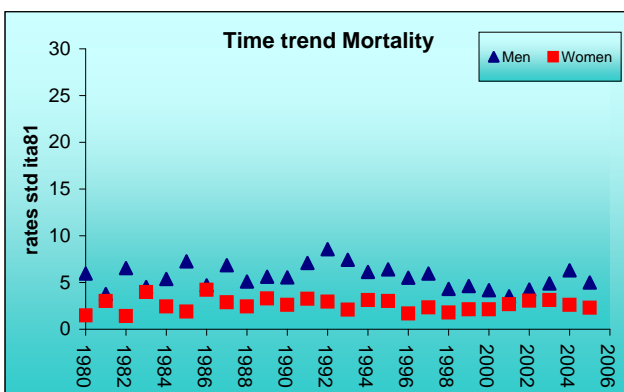
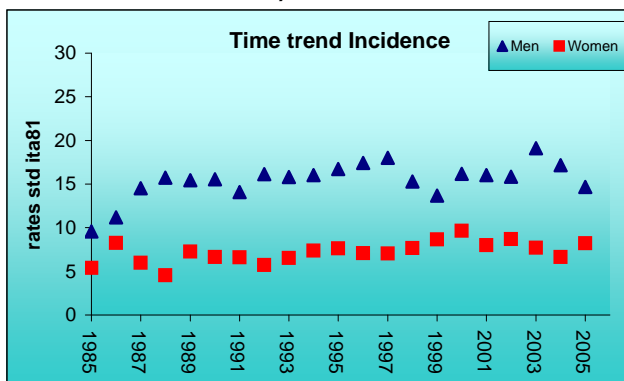
PREVALENCE 31/12/2004

N° of cases x 100.000

	MEN	WOMEN
observed (since 1985)	190.2	91.4
overall (estimated)	218.6	113.4

INDICATORS / METHODS

INCIDENCE - MORTALITY - NUMBER OF CASES
 AGE SPECIFIC RATES - CRUDE RATES - STANDARDIZED RATES
 - SURVIVAL - OBSERVED SURVIVAL
 RELATIVE SURVIVAL AND AGE-STANDARDIZED RELATIVE SURVIVAL - PREVALENCE - NOTES



[PREVIOUS](#)

[HOME](#)

[LIST](#)

[NEXT](#)