

# Piedmont Cancer Registry

City of Turin (899.806 residents at the 2001 census)

## LIVER - ICD-10: C 22

### COMMENTS:

During the last decade incidence appears quite stable in both sexes, with few fluctuations. Survival is poor, but has slightly improved during the most recent periods.

### INCIDENCE Last Update: 2003-2005

		MEN	WOMEN
N° (average/annual)		115	60
RATES	Crude	26.5	12.7
	Age adj (ITA81)	17.0	7.6
	Age adj (WORLD)	12.2	4.0

### MORTALITY Last Update: 2003-2005

		MEN	WOMEN
N° (average/annual)		96	54
RATES	Crude	22.2	11.6
	Age adj (ITA81)	13.5	6.6
	Age adj (WORLD)	9.5	3.3

### SURVIVAL Last Update: 1995-1999 (f.u. 2004)

		MEN	WOMEN
N° of cases		500	215
1 year observed		44.6	39.1
1 year relative		46.3	40.4
5 year observed		10.4	12.6
5 year relative		12.7	15.2
5 year standardized		13.0	18.0

### SURVIVAL Complete data: 1985-1999 (f.u. 2004)

		MEN	WOMEN
N° of cases		1370	583
10 year observed		2.7	4.3
10 year relative		4.2	6.6
15 year observed		1.8	2.9
15 year relative		3.0	5.3

### 5 year Relative Survival TRENDS (f.u. 2004)

	MEN	WOMEN
1985-1987	5.6	5.7
1988-1990	8.7	7.5
1991-1993	6.1	6.1
1994-1996	8.4	15.0
1997-1999	14.5	15.0

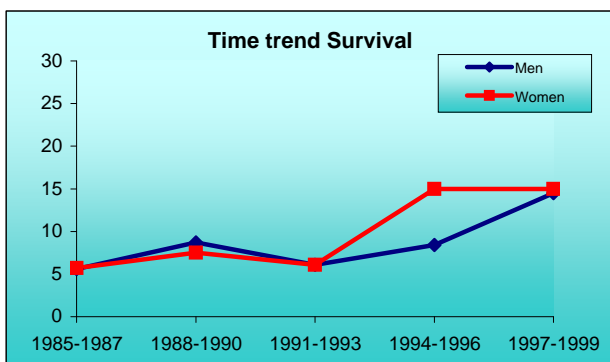
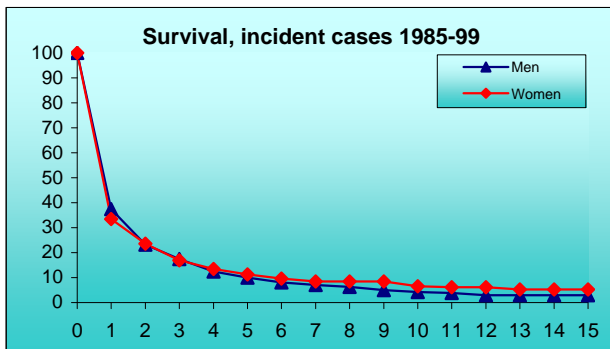
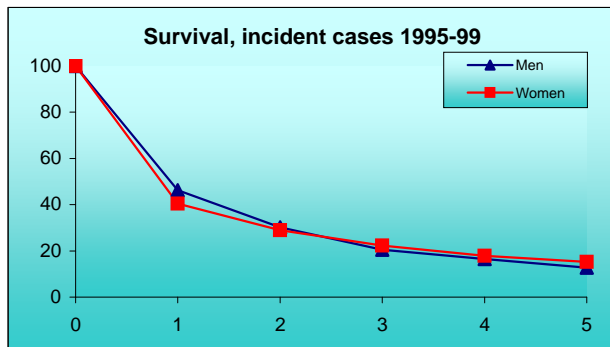
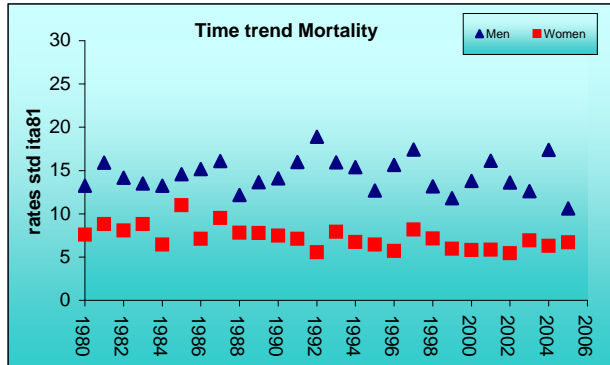
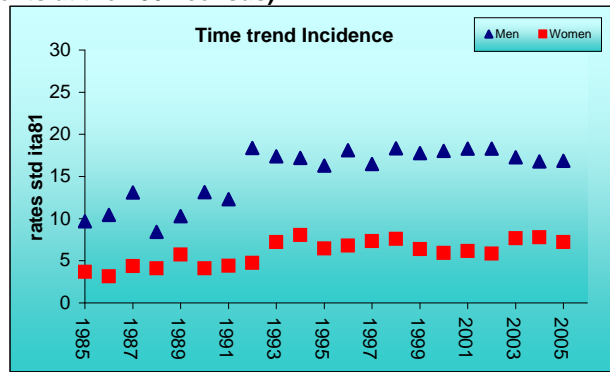
### PREVALENCE 31/12/2004

N° of cases x 100.000

	MEN	WOMEN
observed (since 1985)	48.6	25.1
overall (estimated)	51.3	26.3

### INDICATORS / METHODS

INCIDENCE - MORTALITY - NUMBER OF CASES  
 AGE SPECIFIC RATES - CRUDE RATES - STANDARDIZED RATES -  
 SURVIVAL - OBSERVED SURVIVAL  
 RELATIVE SURVIVAL AND AGE-STANDARDIZED RELATIVE SURVIVAL -  
 PREVALENCE - NOTES



[PREVIOUS](#)

[HOME](#)

[LIST](#)

[NEXT](#)