

Piedmont Cancer Registry
City of Turin (899.806 residents at the 2001 census)

LYMPHATIC LEUKAEMIA - ICD-10: C 91

COMMENTS:

Both Incidence and mortality seem to be stable.
Survival is stable in the last periods after a great improvement in early nineties.

INCIDENCE Last Update: 2003-2005			
		MEN	WOMEN
N° (average/annual)		35	24
RATES	Crude	8.0	5.0
	Age adj (ITA81)	5.5	3.4
	Age adj (WORLD)	4.3	2.7

MORTALITY Last Update: 2003-2005			
		MEN	WOMEN
N° (average/annual)		17	15
RATES	Crude	4.0	3.3
	Age adj (ITA81)	2.2	1.8
	Age adj (WORLD)	1.6	0.8

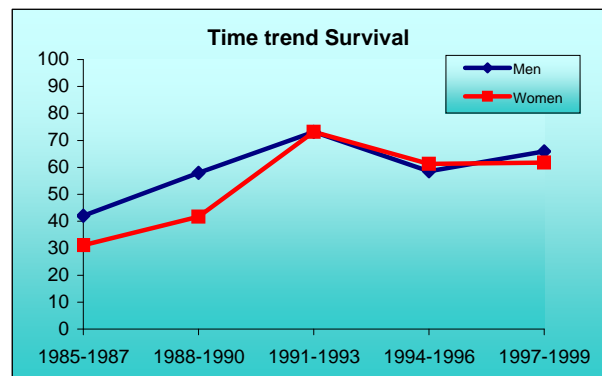
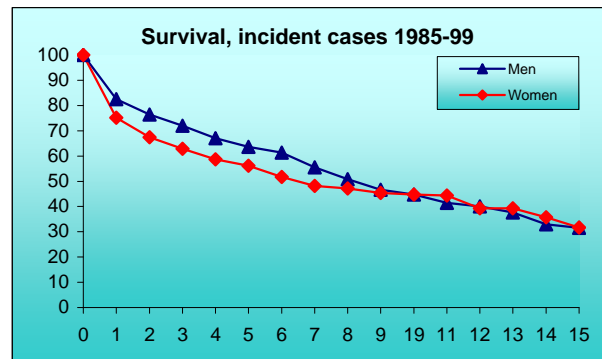
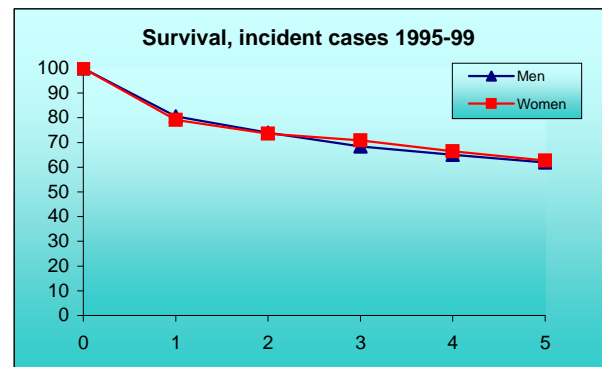
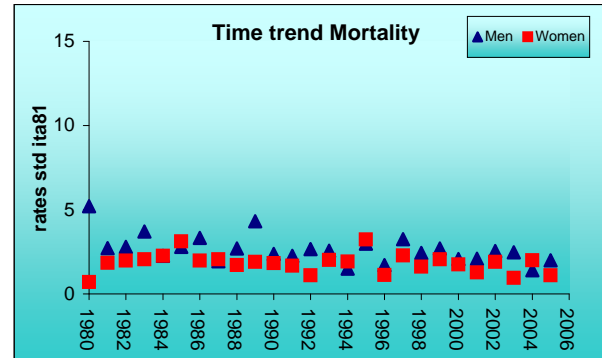
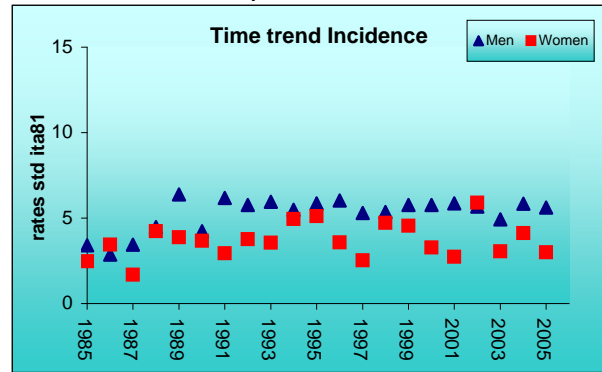
SURVIVAL Last Update: 1995-1999 (f.u. 2004)			
		MEN	WOMEN
N° of cases		127	107
1 year observed		77.2	75.7
1 year relative		80.6	79.1
5 year observed		49.5	49.4
5 year relative		61.9	62.7
5 year standardized		59.0	66.0

SURVIVAL Complete data: 1985-1999 (f.u. 2004)			
		MEN	WOMEN
N° of cases		387	305
10 year observed		29.0	28.1
10 year relative		44.8	44.7
15 year observed		15.8	15.0
15 year relative		31.6	31.7

5 year Relative Survival TRENDS (f.u. 2004)			
		MEN	WOMEN
1985-1987		42.0	31.1
1988-1990		58.0	41.7
1991-1993		73.2	73.2
1994-1996		58.6	61.3
1997-1999		65.9	61.7

PREVALENCE 31/12/2004			
N° of cases x 100.000			
		MEN	WOMEN
observed (since 1985)		50.5	39.8
overall (estimated)		64.9	51.8

INDICATORS / METHODS	
INCIDENCE - MORTALITY - NUMBER OF CASES	
AGE SPECIFIC RATES - CRUDE RATES - STANDARDIZED RATES	
SURVIVAL - OBSERVED SURVIVAL	
RELATIVE SURVIVAL AND AGE-STANDARDIZED RELATIVE SURVIVAL - PREVALENCE - NOTES	



[PREVIOUS](#)

[HOME](#)

[LIST](#)

[NEXT](#)