

**Piedmont Cancer Registry**  
City of Turin (899.806 residents at the 2001 census)

**MESOTHELIOMA - ICD-10: C 45**

**COMMENTS:**

Both incidence and mortality are rather stable since the mid of the nineties. Survival remains extremely poor, without any substantial improvement.

**INCIDENCE Last Update: 2003-2005**

		MEN	WOMEN
N° (average/annual)		19	11
RATES	Crude	4.5	2.4
	Age adj (ITA81)	2.7	1.5
	Age adj (WORLD)	2.0	0.9

**MORTALITY Last Update: 2003-2005 (see notes)**

		MEN	WOMEN
N° (average/annual)		17	10
RATES	Crude	4.0	2.2
	Age adj (ITA81)	2.4	1.4
	Age adj (WORLD)	1.7	0.8

**SURVIVAL Last Update: 1995-1999 (f.u. 2004)**

		MEN	WOMEN
N° of cases		81	48
1 year observed		45.7	47.9
1 year relative		47.3	49.1
5 year observed		7.4	6.3
5 year relative		8.3	7.2
5 year standardized		8,0 (M & W)	

**SURVIVAL Complete data: 1985-1999 (f.u. 2004)**

		MEN	WOMEN
N° of cases		185	120
10 year observed		1.2	0.0
10 year relative		1.5	0.0
15 year observed		0.0	0.0
15 year relative		0.0	0.0

**5 year Relative Survival TRENDS (f.u. 2004)**

	MEN	WOMEN
1985-1987	8.6	9.9
1988-1990	5.5	8.7
1991-1993	0.0	0.0
1994-1996	8.9	6.3
1997-1999	5.1	5.6

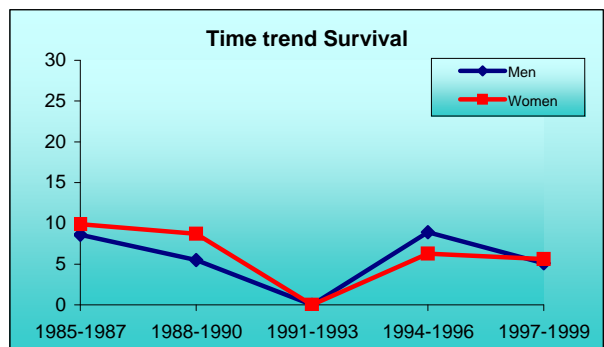
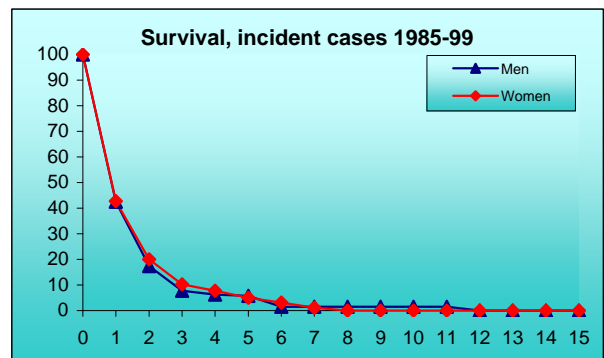
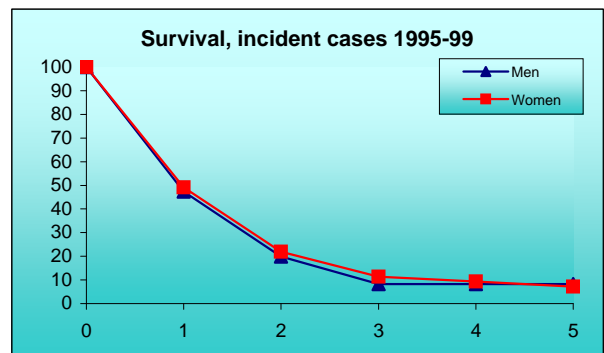
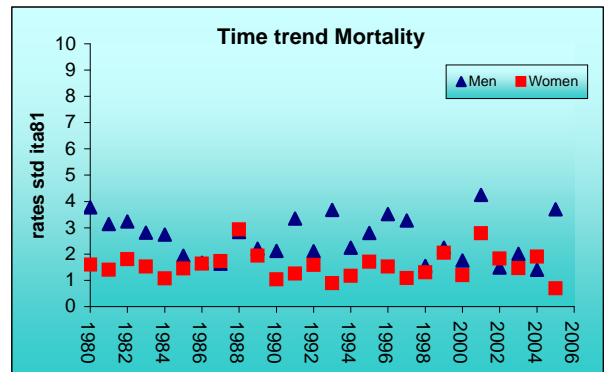
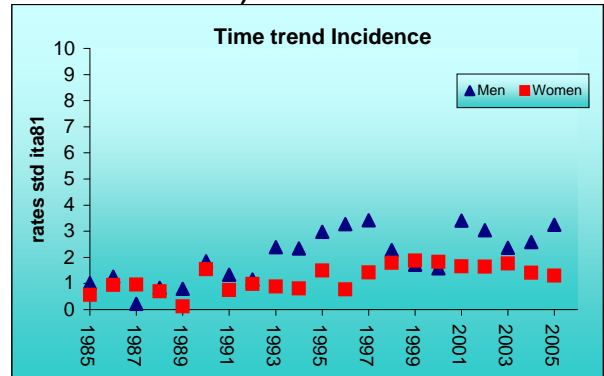
**PREVALENCE 31/12/2004**

N° of cases x 100.000

	MEN	WOMEN
observed (since 1985)	6.0	1.9
overall (estimated)	6.7	2.2

**INDICATORS / METHODS**

INCIDENCE - MORTALITY - NUMBER OF CASES  
AGE SPECIFIC RATES - CRUDE RATES - STANDARDIZED RATES - SURVIVAL  
OBSERVED SURVIVAL  
RELATIVE SURVIVAL AND AGE-STANDARDIZED RELATIVE SURVIVAL -  
PREVALENCE - NOTES



[PREVIOUS](#)

[HOME](#)

[LIST](#)

[NEXT](#)