

Piedmont Cancer Registry
City of Turin (899.806 residents at the 2001 census)

NON HODGKIN'S DISEASE - ICD-10: C 82-85, C 96

COMMENTS:
Both incidence and mortality are quite stable. Survival increases too but probably because of earlier diagnoses.

INCIDENCE Last Update: 2003-2005			
		MEN	WOMEN
N° (average/annual)		115	113
RATES	Crude	26.7	24.0
	Age adj (ITA81)	17.5	15.9
	Age adj (WORLD)	12.8	9.9

MORTALITY Last Update: 2003-2005			
		MEN	WOMEN
N° (average/annual)		40	44
RATES	Crude	9.2	9.4
	Age adj (ITA81)	5.5	5.5
	Age adj (WORLD)	3.9	2.8

SURVIVAL Last Update: 1995-1999 (f.u. 2004)			
		MEN	WOMEN
N° of cases		472	408
1 year observed		71.6	74.5
1 year relative		73.8	76.4
5 year observed		49.2	52.1
5 year relative		57.7	59.9
5 year standardized		54.0	57.0

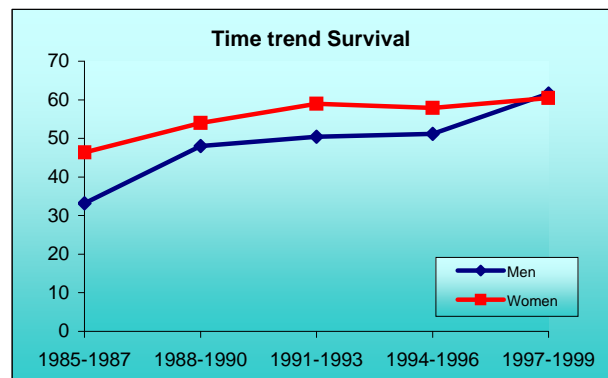
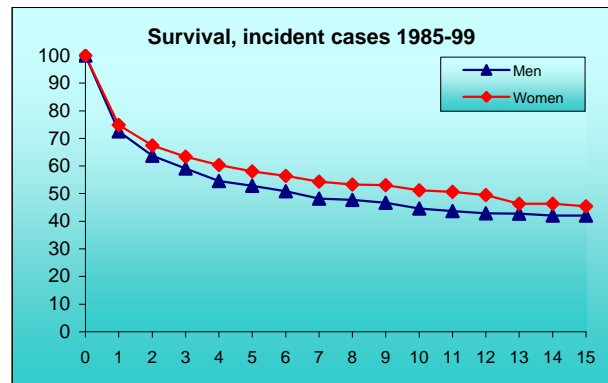
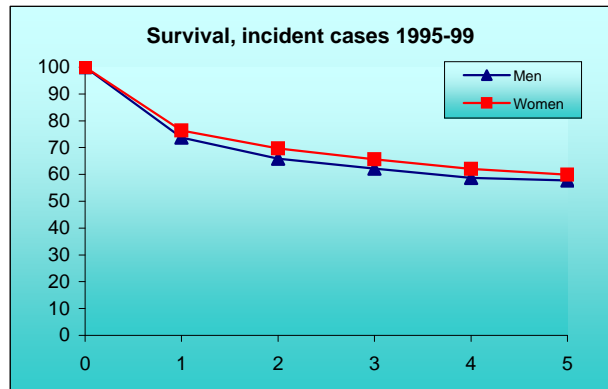
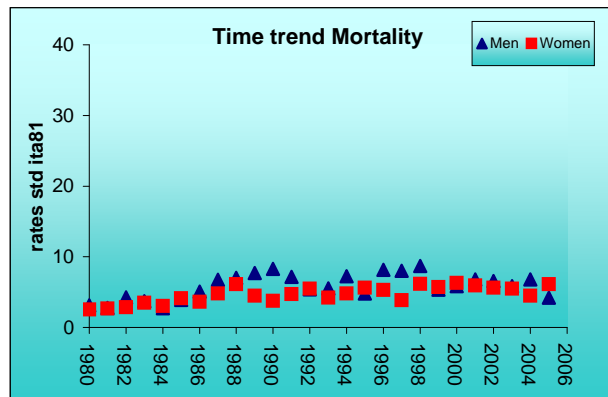
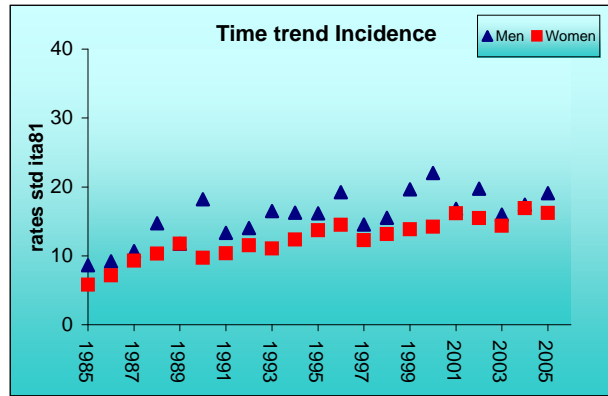
SURVIVAL Complete data: 1985-1999 (f.u. 2004)			
		MEN	WOMEN
N° of cases		1369	1194
10 year observed		31.7	38.3
10 year relative		44.6	51.2
15 year observed		25.0	28.4
15 year relative		42.1	45.4

5 year Relative Survival TRENDS (f.u. 2004)			
		MEN	WOMEN
1985-1987		33.2	46.4
1988-1990		48.0	54.0
1991-1993		50.4	59.0
1994-1996		51.2	57.9
1997-1999		61.6	60.5

PREVALENCE 31/12/2004			
N° of cases x 100.000			
		MEN	WOMEN
observed (since 1985)		163.6	150.6
overall (estimated)		212.2	200.8

INDICATORS / METHODS

INCIDENCE - MORTALITY - NUMBER OF CASES
AGE SPECIFIC RATES - CRUDE RATES - STANDARDIZED RATES -
SURVIVAL - OBSERVED SURVIVAL
RELATIVE SURVIVAL AND AGE-STANDARDIZED RELATIVE SURVIVAL
- PREVALENCE - NOTES



[PREVIOUS](#)

[HOME](#)

[LIST](#)

[NEXT](#)