

# Piedmont Cancer Registry

City of Turin (899.806 residents at the 2001 census)

## PANCREAS - ICD-10: C 25

### COMMENTS:

Pancreatic cancer has a very poor prognosis showing no substantial improvement over years. Incidence and mortality are stable and with similar values.

### INCIDENCE Last Update: 2003-2005

		MEN	WOMEN
N° (average/annual)		79	89
RATES	Crude	18.2	18.9
	Age adj (ITA81)	11.5	11.2
	Age adj (WORLD)	8.3	5.8

### MORTALITY Last Update: 2003-2005

		MEN	WOMEN
N° (average/annual)		71	82
RATES	Crude	16.4	17.4
	Age adj (ITA81)	9.9	9.9
	Age adj (WORLD)	7.0	5.0

### SURVIVAL Last Update: 1995-1999 (f.u. 2004)

		MEN	WOMEN
N° of cases		313	328
1 year observed		15.7	27.4
1 year relative		16.3	28.6
5 year observed		2.2	6.1
5 year relative		2.8	7.6
5 year standardized		3.0	8.0

### SURVIVAL Complete data: 1985-1999 (f.u. 2004)

		MEN	WOMEN
N° of cases		970	1004
10 year observed		2.5	2.4
10 year relative		4.1	3.9
15 year observed		1.6	1.3
15 year relative		3.6	2.7

### 5 year Relative Survival TRENDS (f.u. 2004)

	MEN	WOMEN
1985-1987	8.5	1.5
1988-1990	4.3	3.8
1991-1993	3.4	2.2
1994-1996	4.7	5.9
1997-1999	3.7	6.4

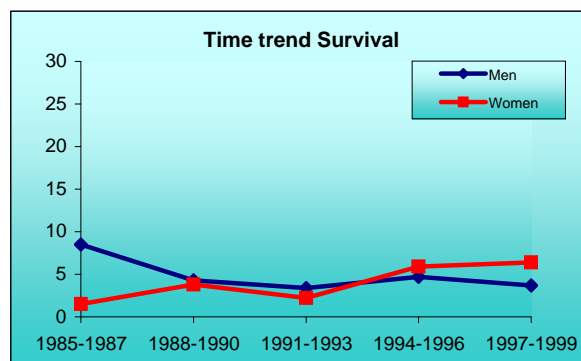
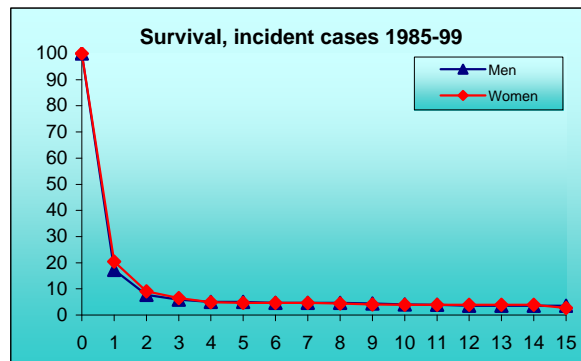
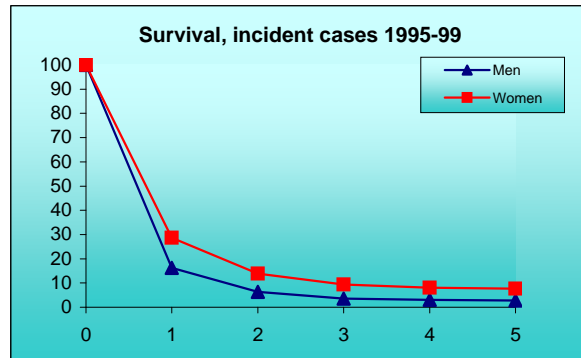
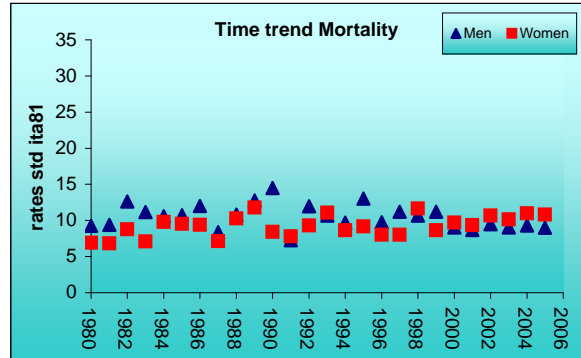
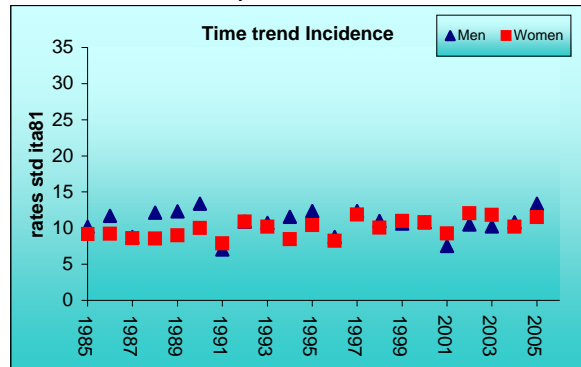
### PREVALENCE 31/12/2004

N° of cases x 100.000

	MEN	WOMEN
observed (since 1985)	15.3	19.1
overall (estimated)	13.7	19.5

### INDICATORS / METHODS

INCIDENCE - MORTALITY - NUMBER OF CASES  
 AGE SPECIFIC RATES - CRUDE RATES - STANDARDIZED RATES -  
 SURVIVAL - OBSERVED SURVIVAL  
 RELATIVE SURVIVAL AND AGE-STANDARDIZED RELATIVE SURVIVAL -  
 PREVALENCE - NOTES



PREVIOUS

HOME

LIST

NEXT