

# Piedmont Cancer Registry

City of Turin (899.806 residents at the 2001 census)

## TONGUE - ICD: C 01-02

### COMMENTS:

Incidence is substantially stable, while mortality is slightly decreasing in both sexes.  
Survival is improving in both sexes.

### INCIDENCE Last Update: 2003-2005

		MEN	WOMEN
N° (average/annual)		18	10
RATES	Crude	4.2	2.1
	Age adj (ITA81)	2.9	1.3
	Age adj (WORLD)	2.2	0.8

### MORTALITY Last Update: 2003-2005

		MEN	WOMEN
N° (average/annual)		6	3
RATES	Crude	1.5	0.6
	Age adj (ITA81)	1.0	0.4
	Age adj (WORLD)	0.8	0.3

### SURVIVAL Last Update: 1995-1999 (f.u. 2004)

	MEN	WOMEN
N° of cases	84	36
1 year observed	79.8	83.3
1 year relative	81.7	85.6
5 year observed	52.3	58.3
5 year relative	59.4	65.6
5 year standardized	58,0 (M & W)	

### SURVIVAL Complete data: 1985-1999 (f.u. 2004)

	MEN	WOMEN
N° of cases	285	129
10 year observed	29.4	31.1
10 year relative	39.6	42.7
15 year observed	19.5	28.3
15 year relative	30.7	42.7

### 5 year Relative Survival TRENDS (f.u. 2004)

	MEN	WOMEN
1985-1987	39.5	19.8
1988-1990	37.4	39.8
1991-1993	38.1	61.1
1994-1996	61.0	44.0
1997-1999	55.6	74.3

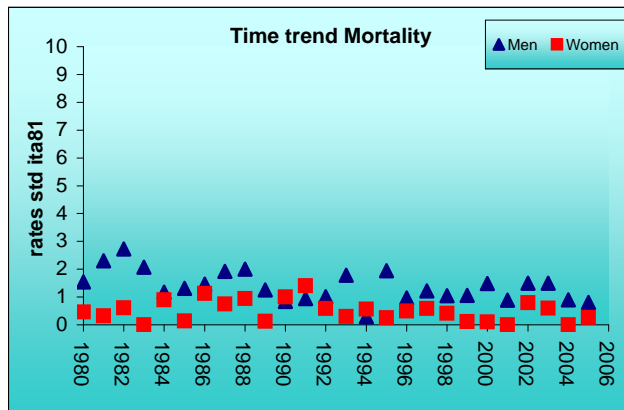
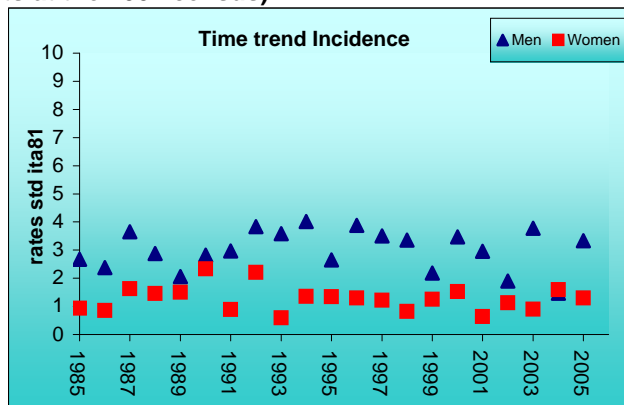
### PREVALENCE 31/12/2004

N° of cases x 100.000

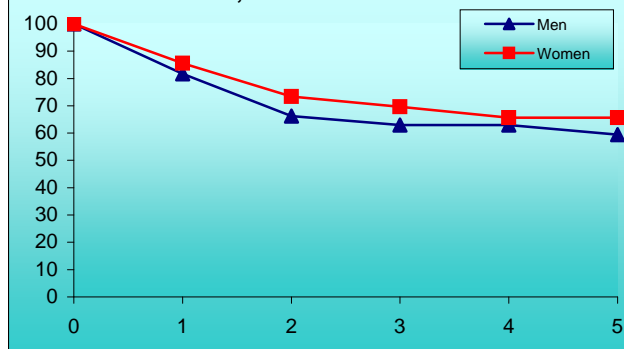
	MEN	WOMEN
observed (since 1985)	25.7	14.0
overall (estimated)	29.4	18.2

### INDICATORS / METHODS

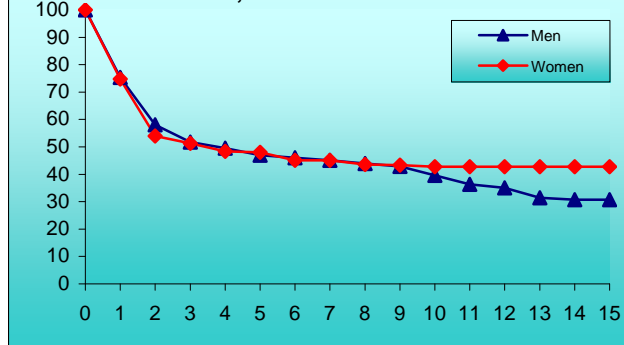
INCIDENCE - MORTALITY - NUMBER OF CASES  
AGE SPECIFIC RATES - CRUDE RATES - STANDARDIZED RATES -  
SURVIVAL - OBSERVED SURVIVAL  
RELATIVE SURVIVAL AND AGE-STANDARDIZED RELATIVE SURVIVAL -  
PREVALENCE - NOTES



### Survival, incident cases 1995-99



### Survival, incident cases 1985-99



### Time trend Survival

