

Piedmont Cancer Registry
City of Turin (910,504 inhabitants at 31.12.2009)

CERVIX UTERI - ICD-10: C 53

COMMENTS:

Incidence rate keeps going down, while the mortality is stable at a very low level. This is a clear effect of the mass screening.

INCIDENCE Last Update: 2004-2006

		WOMEN
N° (average/annual)		35
RATES	Crude	7.5
	Age adj (ITA81)	5.4
	Age adj (WORLD)	3.8
Age specific rates		► WOMEN

MORTALITY Last Update: 2004-2006 (see notes)

		WOMEN
N° (average/annual)		10
RATES	Crude	2.1
	Age adj (ITA81)	1.5
	Age adj (WORLD)	0.9
Age specific rates		► WOMEN

SURVIVAL Last Update: 1995-1999 (f.u. 2004)

		WOMEN
N° of cases		262
1 year observed		84.0
1 year relative		85.2
5 year observed		49.6
5 year relative		53.8
5 year standardized		55.0

SURVIVAL Complete data: 1985-1999 (f.u. 2004)

		WOMEN
N° of cases		1068
10 year observed		45.8
10 year relative		55.7
15 year observed		41.4
15 year relative		55.7

5 year Relative Survival TRENDS (f.u. 2004)

	WOMEN
1985-1987	63.3
1988-1990	55.6
1991-1993	61.8
1994-1996	58.8
1997-1999	52.6

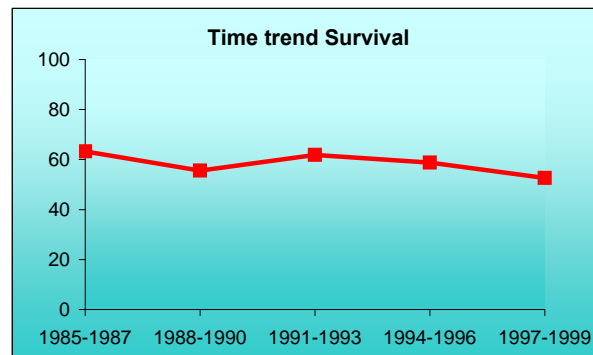
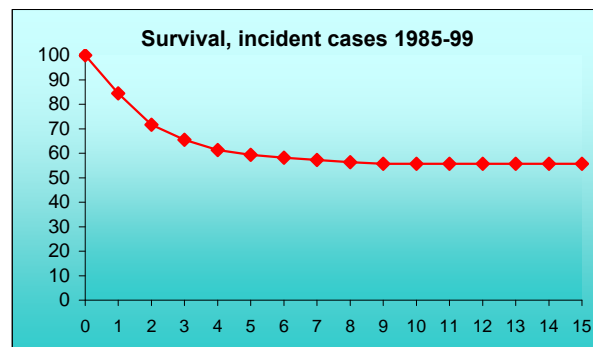
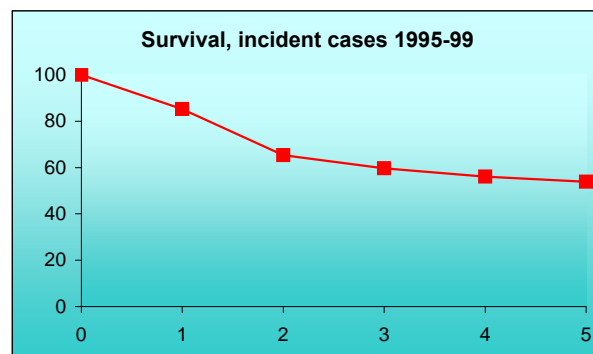
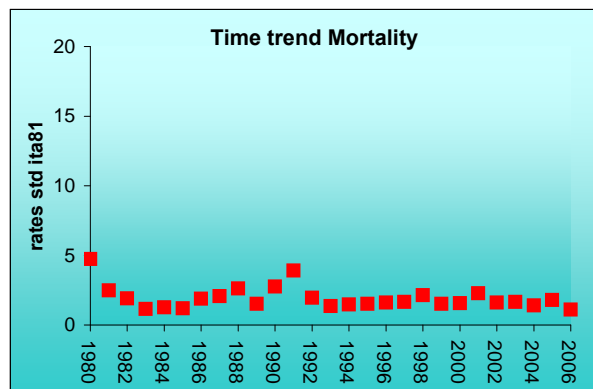
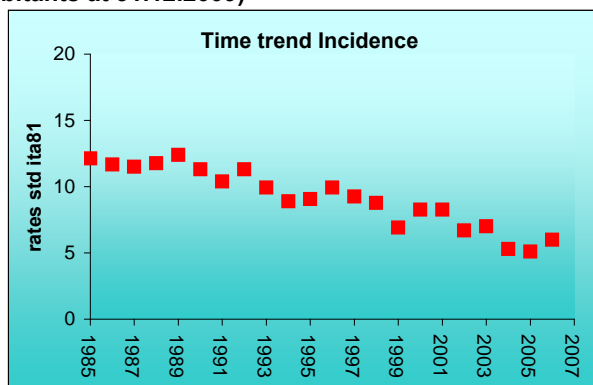
PREVALENCE 31/12/2004

N° of cases x 100.000

	WOMEN
observed (since 1985)	104.6
overall (estimated)	182.8

INDICATORS / METHODS

INCIDENCE - MORTALITY - NUMBER OF CASES - AGE SPECIFIC RATES - CRUDE RATES - STANDARDIZED RATES - SURVIVAL - OBSERVED SURVIVAL - RELATIVE SURVIVAL AND AGE-STANDARDIZED RELATIVE SURVIVAL - PREVALENCE - NOTES



[PREVIOUS](#)

[HOME](#)

[LIST](#)

[NEXT](#)