

Piedmont Cancer Registry
City of Turin (910,504 inhabitants at 31.12.2009)

BRAIN and Other C.N.S. - ICD-10: C 70-72

COMMENTS:
Both incidence and mortality seem to be stable.
Survival remains poor and does not increase over the observed period.

INCIDENCE Last Update: 2004-2006			
		MEN	WOMEN
N° (average/annual)		46	51
RATES	Crude	10.6	10.9
	Age adj (ITA81)	7.9	8.3
	Age adj (WORLD)	6.7	6.3
Age specific rates		► MEN	► WOMEN

MORTALITY Last Update: 2004-2006			
		MEN	WOMEN
N° (average/annual)		29	29
RATES	Crude	6.7	6.2
	Age adj (ITA81)	4.6	4.0
	Age adj (WORLD)	3.7	2.5
Age specific rates		► MEN	► WOMEN

SURVIVAL Last Update: 1995-1999 (f.u. 2004)			
		MEN	WOMEN
N° of cases		195	188
1 year observed		37.4	31.7
1 year relative		38.2	32.4
5 year observed		14.3	12.3
5 year relative		16.1	13.8
5 year standardized		20.0	18.0

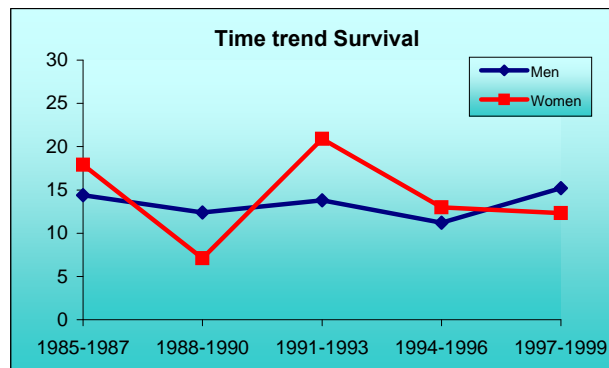
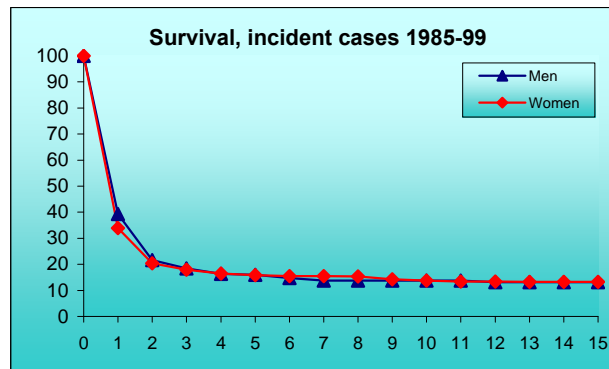
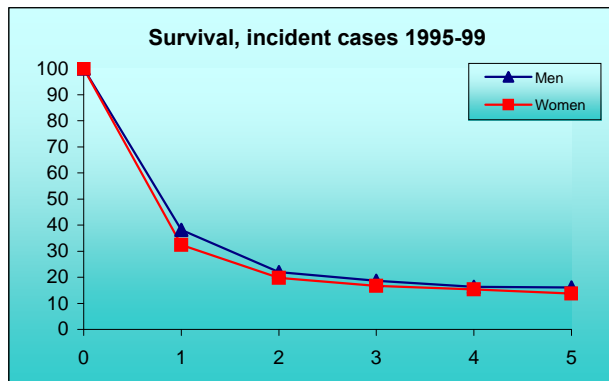
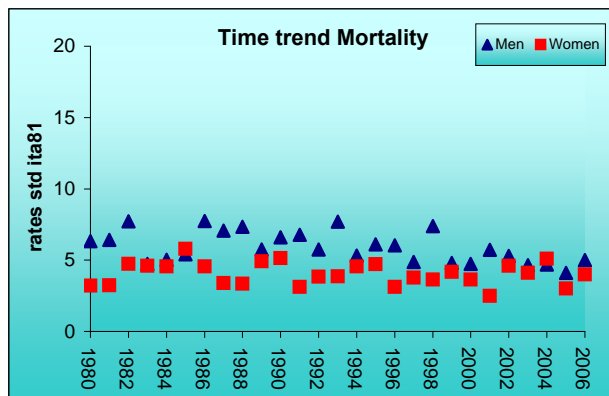
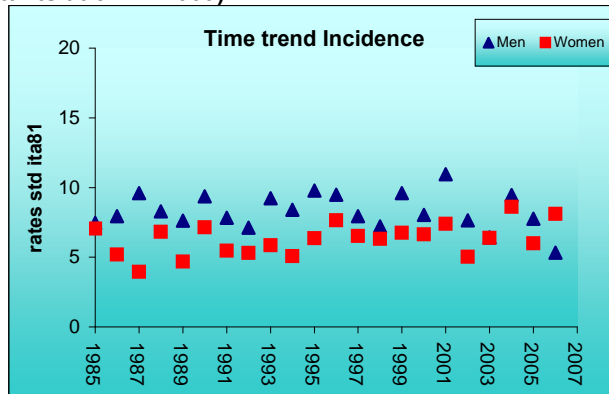
SURVIVAL Complete data: 1985-1999 (f.u. 2004)			
		MEN	WOMEN
N° of cases		658	559
10 year observed		11.0	10.8
10 year relative		13.8	13.7
15 year observed		9.2	9.1
15 year relative		13.1	13.3

5 year Relative Survival TRENDS (f.u. 2004)			
		MEN	WOMEN
1985-1987		14.4	17.9
1988-1990		12.4	7.1
1991-1993		13.8	20.9
1994-1996		11.2	13.0
1997-1999		15.2	12.3

PREVALENCE 31/12/2004			
N° of cases x 100.000			
		MEN	WOMEN
observed (since 1985)		37.3	27.2
overall (estimated)		50.1	33.7

INDICATORS / METHODS

INCIDENCE - MORTALITY - NUMBER OF CASES
AGE SPECIFIC RATES - CRUDE RATES - STANDARDIZED RATES -
SURVIVAL - OBSERVED SURVIVAL
RELATIVE SURVIVAL AND AGE-STANDARDIZED RELATIVE SURVIVAL -
PREVALENCE - NOTES



[PREVIOUS](#)

[HOME](#)

[LIST](#)

[NEXT](#)