

Piedmont Cancer Registry
City of Turin (910,504 inhabitants at 31.12.2009)

CORPUS UTERI - ICD-10: C 54

COMMENTS:

Both incidence and mortality appear to be stable. Survival is rather high and stable over time.

INCIDENCE Last Update: 2004-2006

		WOMEN
N° (average/annual)		125
RATES	Crude	26.7
	Age adj (ITA81)	18.4
	Age adj (WORLD)	12.0
Age specific rates		► WOMEN

MORTALITY Last Update: 2004-2006 (see notes)

		WOMEN
N° (average/annual)		15
RATES	Crude	3.3
	Age adj (ITA81)	1.9
	Age adj (WORLD)	1.0
Age specific rates		► WOMEN

SURVIVAL Last Update: 1995-1999 (f.u. 2004)

		WOMEN
N° of cases		539
1 year observed		87.6
1 year relative		89.2
5 year observed		69.7
5 year relative		77.3
5 year standardized		73.0

SURVIVAL Complete data: 1985-1999 (f.u. 2004)

		WOMEN
N° of cases		1783
10 year observed		57.0
10 year relative		72.4
15 year observed		49.7
15 year relative		72.4

5 year Relative Survival TRENDS (f.u. 2004)

		WOMEN
1985-1987		73.9
1988-1990		77.7
1991-1993		75.9
1994-1996		80.8
1997-1999		73.7

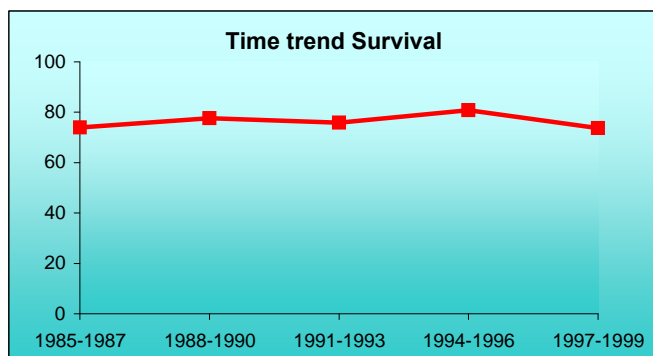
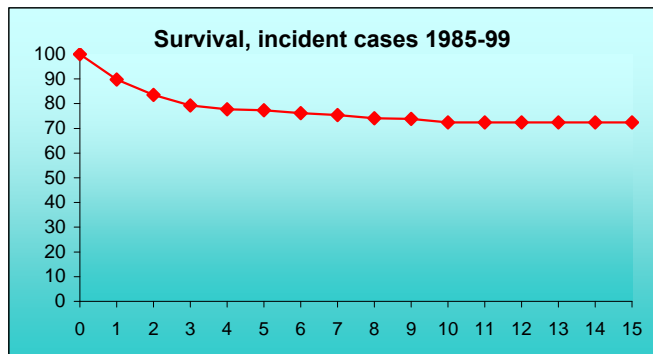
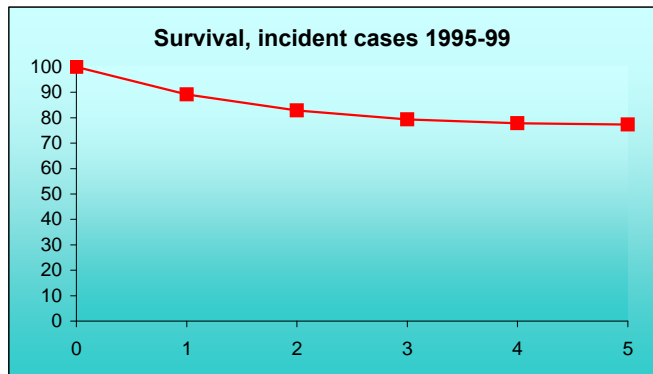
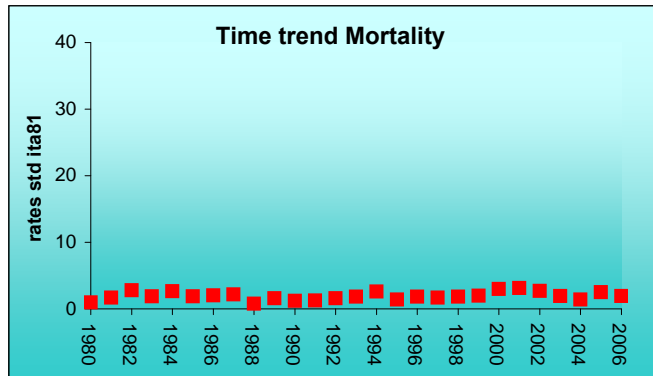
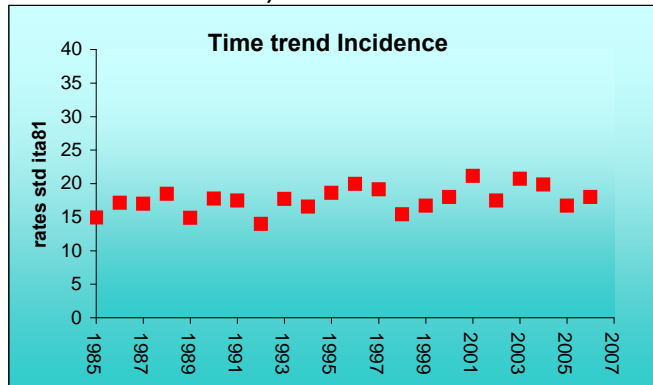
PREVALENCE 31/12/2004

N° of cases x 100.000

		WOMEN
observed (since 1985)		278.8
overall (estimated)		343.5

INDICATORS / METHODS

INCIDENCE - MORTALITY - NUMBER OF CASES - AGE SPECIFIC RATES - CRUDE RATES - STANDARDIZED RATES - SURVIVAL - OBSERVED SURVIVAL - RELATIVE SURVIVAL AND AGE-STANDARDIZED RELATIVE SURVIVAL - PREVALENCE - NOTES



[PREVIOUS](#)

[HOME](#)

[LIST](#)

[NEXT](#)