

Piedmont Cancer Registry
City of Turin (910,504 inhabitants at 31.12.2009)

KIDNEY - ICD-10: C 64

COMMENTS:
Overall incidence is stable in both sexes, and mortality does not show a clear pattern. Survival is improving in both sexes.

INCIDENCE Last Update: 2004-2006			
		MEN	WOMEN
N° (average/annual)		89	42
RATES	Crude	20.6	8.9
	Age adj (ITA81)	14.1	6.1
	Age adj (WORLD)	10.7	4.2
Age specific rates		► MEN	► WOMEN

MORTALITY Last Update: 2004-2006			
		MEN	WOMEN
N° (average/annual)		45	21
RATES	Crude	10.4	4.4
	Age adj (ITA81)	6.1	2.4
	Age adj (WORLD)	4.1	1.2
Age specific rates		► MEN	► WOMEN

SURVIVAL Last Update: 1995-1999 (f.u. 2004)			
		MEN	WOMEN
N° of cases		339	188
1 year observed		80.5	77.1
1 year relative		83.2	79.2
5 year observed		63.4	63.1
5 year relative		74.3	72.8
5 year standardized		70.0	71.0

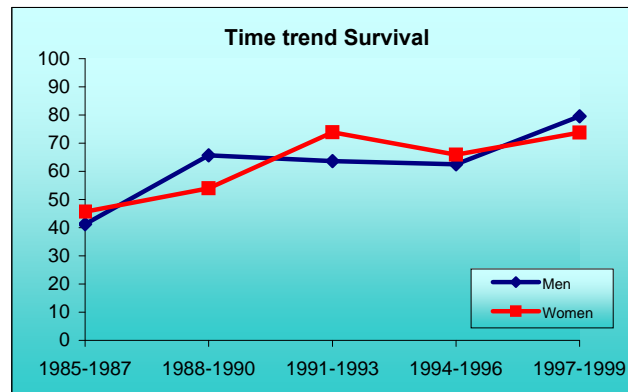
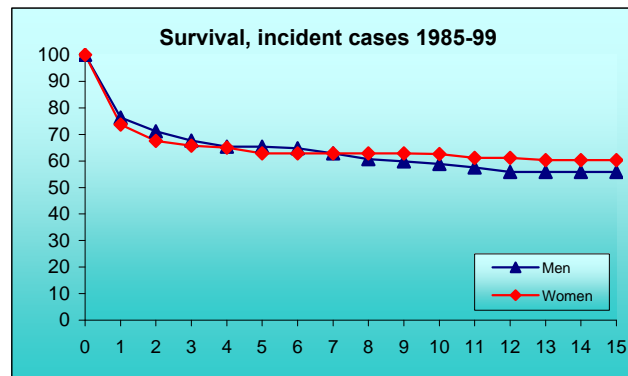
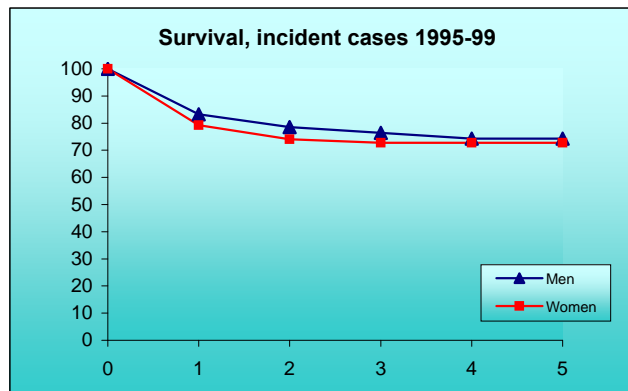
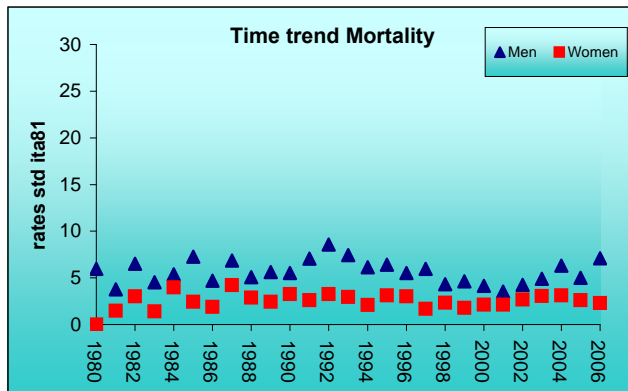
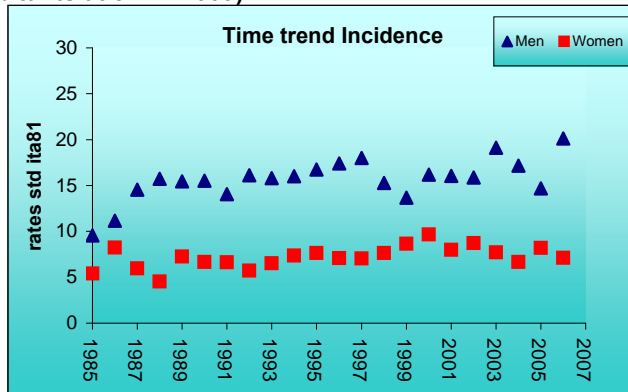
SURVIVAL Complete data: 1985-1999 (f.u. 2004)			
		MEN	WOMEN
N° of cases		1055	565
10 year observed		40.8	45.4
10 year relative		58.9	62.6
15 year observed		31.6	36.8
15 year relative		55.9	60.3

5 year Relative Survival TRENDS (f.u. 2004)			
		MEN	WOMEN
1985-1987		41.2	45.7
1988-1990		65.7	54.0
1991-1993		63.6	73.9
1994-1996		62.5	65.9
1997-1999		79.6	73.8

PREVALENCE 31/12/2004			
N° of cases x 100.000			
		MEN	WOMEN
observed (since 1985)		190.2	91.4
overall (estimated)		218.6	113.4

INDICATORS / METHODS

INCIDENCE - MORTALITY - NUMBER OF CASES
AGE SPECIFIC RATES - CRUDE RATES - STANDARDIZED RATES
- SURVIVAL - OBSERVED SURVIVAL
RELATIVE SURVIVAL AND AGE-STANDARDIZED RELATIVE SURVIVAL - PREVALENCE - NOTES



[PREVIOUS](#)

[HOME](#)

[LIST](#)

[NEXT](#)