

Piedmont Cancer Registry
City of Turin (910,504 inhabitants at 31.12.2009)

MESOTHELIOMA - ICD-10: C 45

COMMENTS:

Both incidence and mortality are rather stable since the mid of the nineties. Survival remains extremely poor, without any substantial improvement.

INCIDENCE Last Update: 2004-2006

		MEN	WOMEN
N° (average/annual)		20	11
RATES	Crude	4.6	2.3
	Age adj (ITA81)	2.7	1.5
	Age adj (WORLD)	1.9	0.8
Age specific rates		► MEN	► WOMEN

MORTALITY Last Update: 2004-2006 (see notes)

		MEN	WOMEN
N° (average/annual)		18	11
RATES	Crude	4.1	2.4
	Age adj (ITA81)	2.4	1.4
	Age adj (WORLD)	1.6	0.8
Age specific rates		► MEN	► WOMEN

SURVIVAL Last Update: 1995-1999 (f.u. 2004)

		MEN	WOMEN
N° of cases		81	48
1 year observed		45.7	47.9
1 year relative		47.3	49.1
5 year observed		7.4	6.3
5 year relative		8.3	7.2
5 year standardized		8,0 (M & W)	

SURVIVAL Complete data: 1985-1999 (f.u. 2004)

		MEN	WOMEN
N° of cases		185	120
10 year observed		1.2	0.0
10 year relative		1.5	0.0
15 year observed		0.0	0.0
15 year relative		0.0	0.0

5 year Relative Survival TRENDS (f.u. 2004)

	MEN	WOMEN
1985-1987	8.6	9.9
1988-1990	5.5	8.7
1991-1993	0.0	0.0
1994-1996	8.9	6.3
1997-1999	5.1	5.6

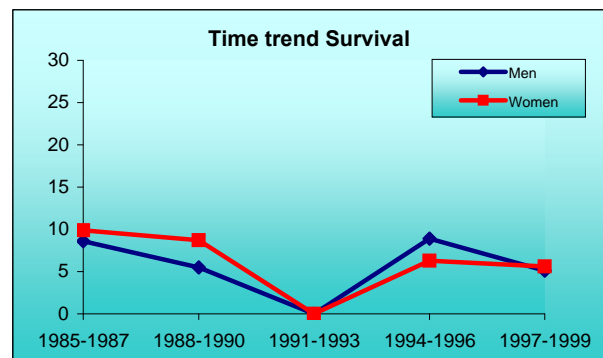
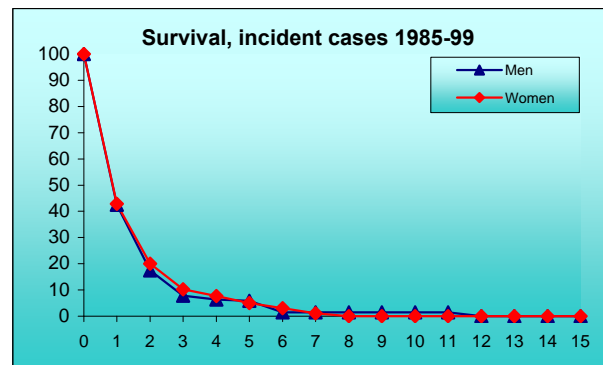
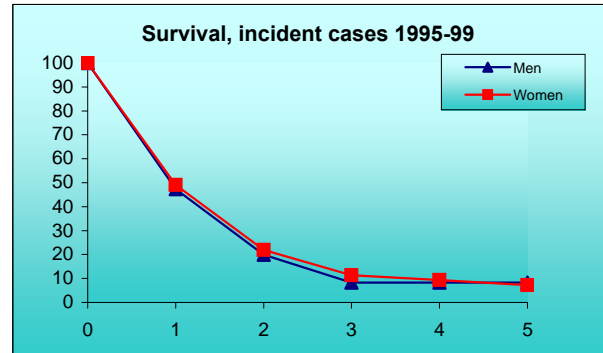
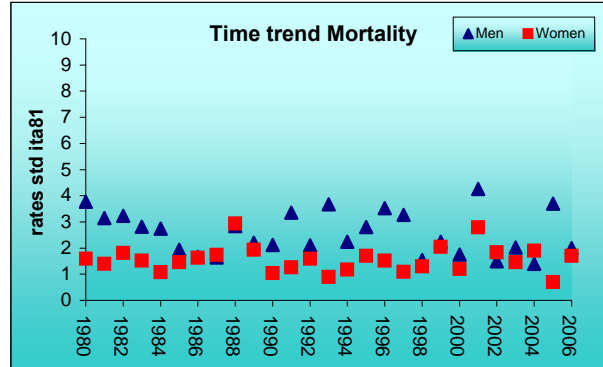
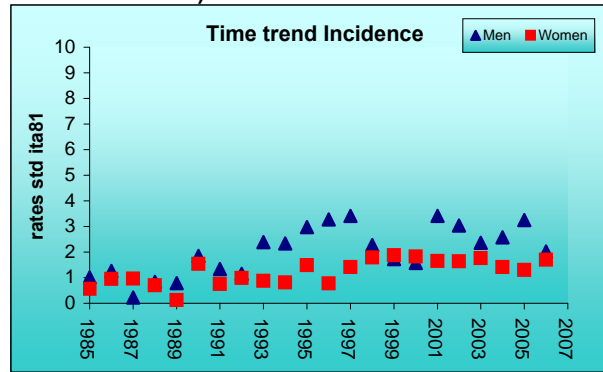
PREVALENCE 31/12/2004

N° of cases x 100.000

	MEN	WOMEN
observed (since 1985)	6.0	1.9
overall (estimated)	6.7	2.2

INDICATORS / METHODS

INCIDENCE - MORTALITY - NUMBER OF CASES
AGE SPECIFIC RATES - CRUDE RATES - STANDARDIZED RATES - SURVIVAL
OBSERVED SURVIVAL
RELATIVE SURVIVAL AND AGE-STANDARDIZED RELATIVE SURVIVAL -
PREVALENCE - NOTES



[PREVIOUS](#)

[HOME](#)

[LIST](#)

[NEXT](#)