

Piedmont Cancer Registry
City of Turin (910,504 inhabitants at 31.12.2009)

MYELOID LEUKAEMIA - ICD-10: C 92

COMMENTS:

Stability in incidence and in mortality is observed.
Survival is still poor.

INCIDENCE Last Update: 2004-2006

		MEN	WOMEN
N° (average/annual)		30	28
RATES	Crude	6.3	5.9
	Age adj (ITA81)	4.3	4.0
	Age adj (WORLD)	2.8	2.5
Age specific rates		► MEN	► WOMEN

MORTALITY Last Update: 2004-2006

		MEN	WOMEN
N° (average/annual)		21	19
RATES	Crude	4.9	4.0
	Age adj (ITA81)	2.9	2.5
	Age adj (WORLD)	2.1	1.4
Age specific rates		► MEN	► WOMEN

SURVIVAL Last Update: 1995-1999 (f.u. 2004)

	MEN	WOMEN
N° of cases	126	116
1 year observed	43.7	49.1
1 year relative	45.3	50.4
5 year observed	23.0	30.1
5 year relative	27.9	34.6
5 year standardized	22.0	25.0

SURVIVAL Complete data: 1985-1999 (f.u. 2004)

	MEN	WOMEN
N° of cases	413	381
10 year observed	12.7	14.6
10 year relative	18.4	19.8
15 year observed	11.3	10.7
15 year relative	18.4	16.8

5 year Relative Survival TRENDS (f.u. 2004)

	MEN	WOMEN
1985-1987	9.2	8.4
1988-1990	24.4	11.7
1991-1993	23.9	20.2
1994-1996	29.3	32.0
1997-1999	23.4	29.7

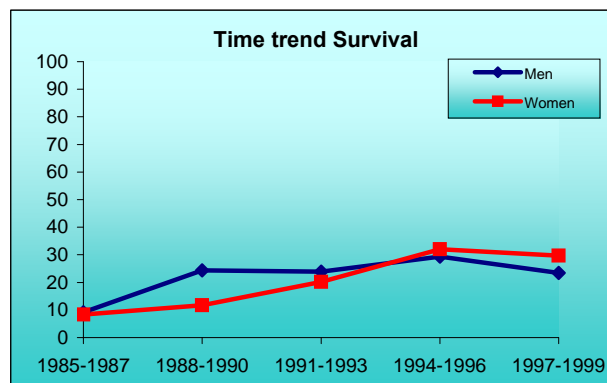
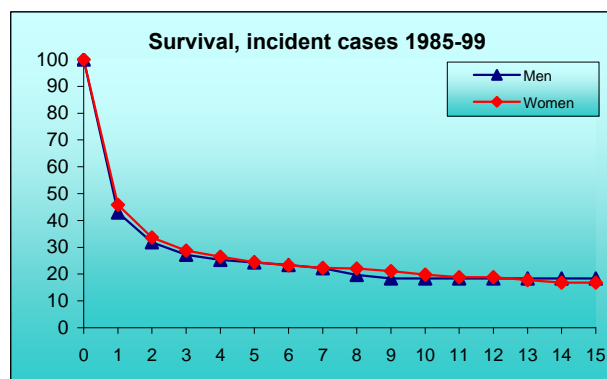
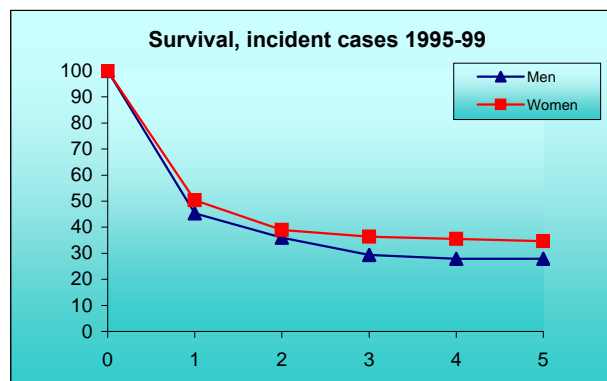
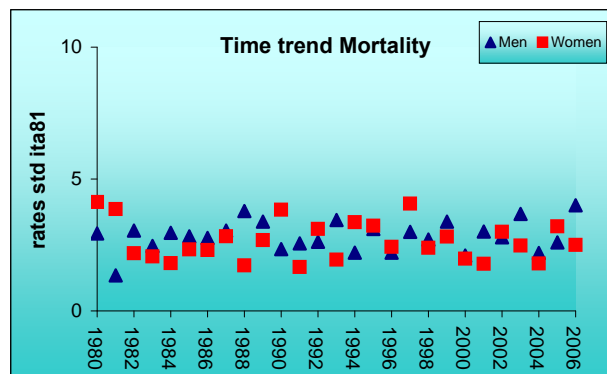
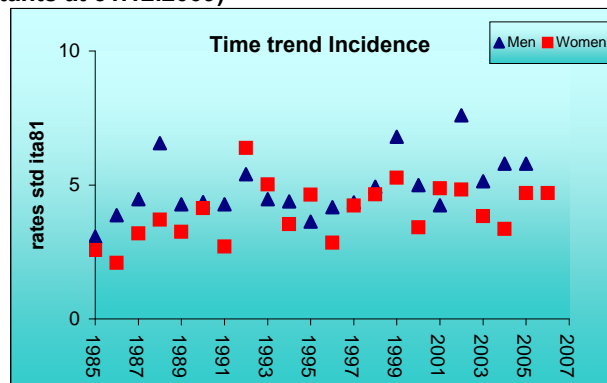
PREVALENCE 31/12/2004

N° of cases x 100.000

	MEN	WOMEN
observed (since 1985)	25.0	19.4
overall (estimated)	30.6	23.4

INDICATORS / METHODS

INCIDENCE - MORTALITY - NUMBER OF CASES
AGE SPECIFIC RATES - CRUDE RATES - STANDARDIZED RATES -
SURVIVAL - OBSERVED SURVIVAL
RELATIVE SURVIVAL AND AGE-STANDARDIZED RELATIVE SURVIVAL -
PREVALENCE - NOTES



[PREVIOUS](#)

[HOME](#)

[LIST](#)

[NEXT](#)