

Piedmont Cancer Registry
City of Turin (910,504 inhabitants at 31.12.2009)

NON HODGKIN'S DISEASE - ICD-10: C 82-85, C 96

COMMENTS:
The incidence slowly but constantly increases during the last four years in both sexes. Mortality is quite stable.

INCIDENCE Last Update: 2004-2006			
	MEN	WOMEN	
N° (average/annual)	128	126	
RATES	Crude	29.7	26.8
	Age adj (ITA81)	19.7	17.6
	Age adj (WORLD)	14.7	11.0
Age specific rates	► MEN	► WOMEN	

MORTALITY Last Update: 2004-2006			
	MEN	WOMEN	
N° (average/annual)	42	43	
RATES	Crude	9.8	9.2
	Age adj (ITA81)	5.7	5.1
	Age adj (WORLD)	4.0	2.5
Age specific rates	► MEN	► WOMEN	

SURVIVAL Last Update: 1995-1999 (f.u. 2004)		
	MEN	WOMEN
N° of cases	472	408
1 year observed	71.6	74.5
1 year relative	73.8	76.4
5 year observed	49.2	52.1
5 year relative	57.7	59.9
5 year standardized	54.0	57.0

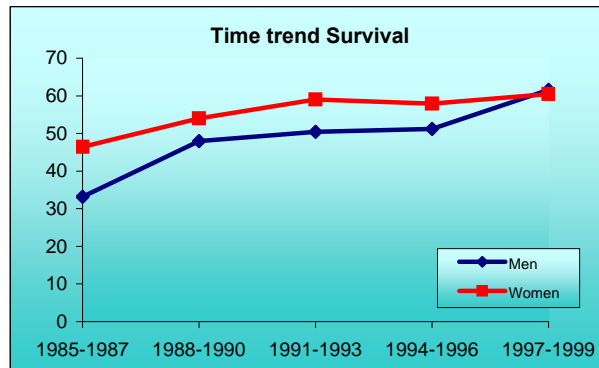
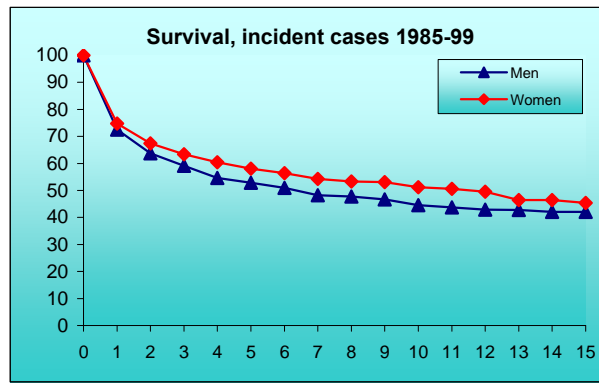
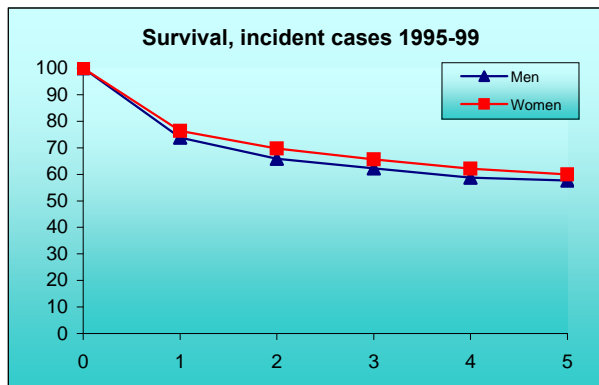
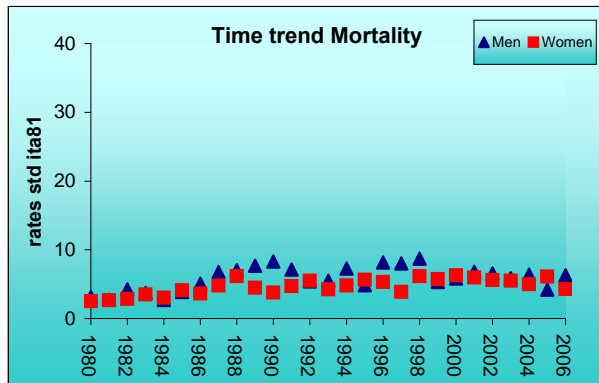
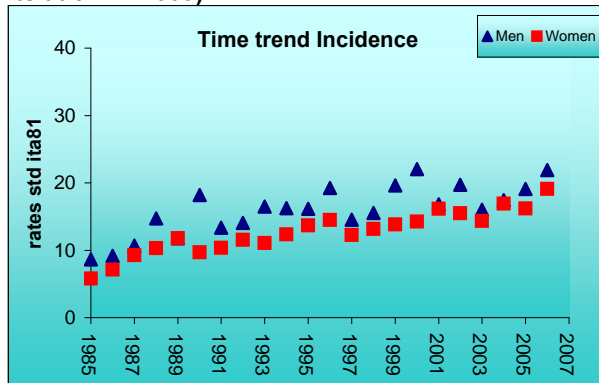
SURVIVAL Complete data: 1985-1999 (f.u. 2004)		
	MEN	WOMEN
N° of cases	1369	1194
10 year observed	31.7	38.3
10 year relative	44.6	51.2
15 year observed	25.0	28.4
15 year relative	42.1	45.4

5 year Relative Survival TRENDS (f.u. 2004)		
	MEN	WOMEN
1985-1987	33.2	46.4
1988-1990	48.0	54.0
1991-1993	50.4	59.0
1994-1996	51.2	57.9
1997-1999	61.6	60.5

PREVALENCE 31/12/2004		
N° of cases x 100.000		
	MEN	WOMEN
observed (since 1985)	163.6	150.6
overall (estimated)	212.2	200.8

INDICATORS / METHODS

INCIDENCE - MORTALITY - NUMBER OF CASES
AGE SPECIFIC RATES - CRUDE RATES - STANDARDIZED RATES - SURVIVAL - OBSERVED SURVIVAL
RELATIVE SURVIVAL AND AGE-STANDARDIZED RELATIVE SURVIVAL - PREVALENCE - NOTES



[PREVIOUS](#)

[HOME](#)

[LIST](#)

[NEXT](#)