

Piedmont Cancer Registry
City of Turin (910,504 inhabitants at 31.12.2009)

PANCREAS - ICD-10: C 25	
COMMENTS: Pancreatic cancer has a very poor prognosis showing no substantial improvement over years. Incidence and mortality are stable and with similar values.	

INCIDENCE Last Update: 2004-2006			
		MEN	WOMEN
N° (average/annual)		80	88
RATES	Crude	18.5	18.8
	Age adj (ITA81)	11.5	10.8
	Age adj (WORLD)	8.2	5.5
Age specific rates		▶ MEN	▶ WOMEN

MORTALITY Last Update: 2004-2006			
		MEN	WOMEN
N° (average/annual)		74	81
RATES	Crude	17.1	17.2
	Age adj (ITA81)	10.1	9.8
	Age adj (WORLD)	7.0	4.9
Age specific rates		▶ MEN	▶ WOMEN

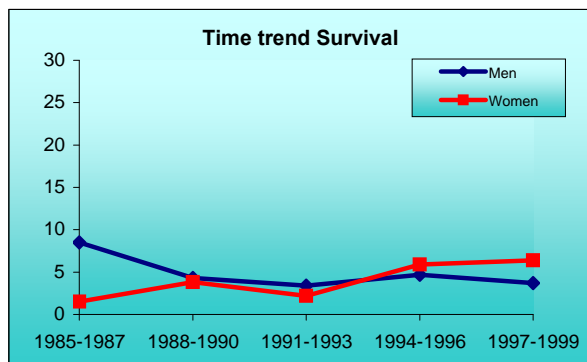
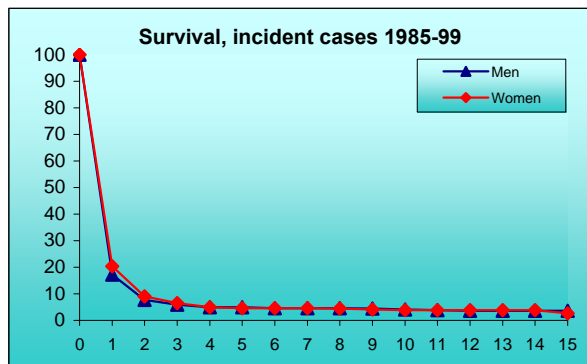
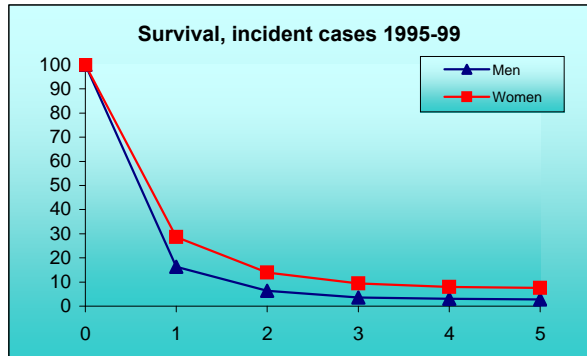
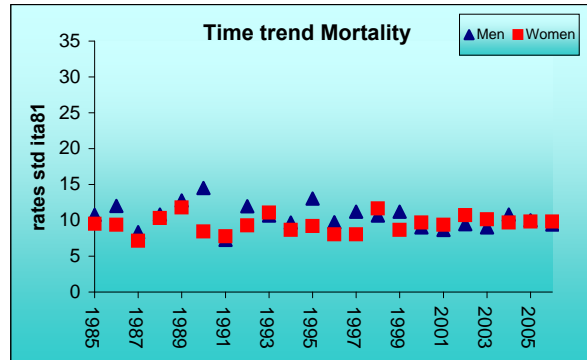
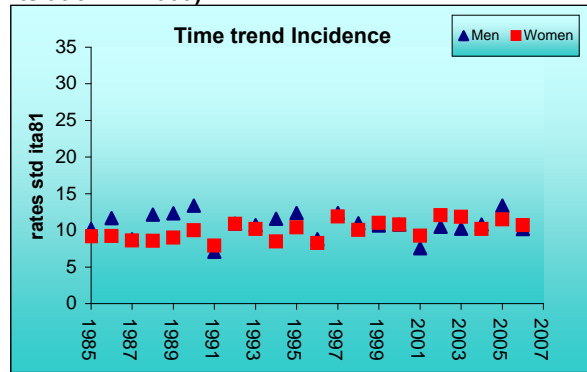
SURVIVAL Last Update: 1995-1999 (f.u. 2004)			
		MEN	WOMEN
N° of cases		313	328
1 year observed		15.7	27.4
1 year relative		16.3	28.6
5 year observed		2.2	6.1
5 year relative		2.8	7.6
5 year standardized		3.0	8.0

SURVIVAL Complete data: 1985-1999 (f.u. 2004)			
		MEN	WOMEN
N° of cases		970	1004
10 year observed		2.5	2.4
10 year relative		4.1	3.9
15 year observed		1.6	1.3
15 year relative		3.6	2.7

5 year Relative Survival TRENDS (f.u. 2004)			
	MEN	WOMEN	
1985-1987	8.5	1.5	
1988-1990	4.3	3.8	
1991-1993	3.4	2.2	
1994-1996	4.7	5.9	
1997-1999	3.7	6.4	

PREVALENCE 31/12/2004			
N° of cases x 100.000			
	MEN	WOMEN	
observed (since 1985)	15.3	19.1	
overall (estimated)	13.7	19.5	

INDICATORS / METHODS
INCIDENCE - MORTALITY - NUMBER OF CASES
AGE SPECIFIC RATES - CRUDE RATES - STANDARDIZED RATES - SURVIVAL - OBSERVED SURVIVAL
RELATIVE SURVIVAL AND AGE-STANDARDIZED RELATIVE SURVIVAL - PREVALENCE - NOTES



[PREVIOUS](#)

[HOME](#)

[LIST](#)

[NEXT](#)