

Piedmont Cancer Registry
City of Turin (910,504 inhabitants at 31.12.2009)

STOMACH - ICD-10: C 16

COMMENTS:
Incidence and mortality clearly decreased in both sexes. Also survival has improved, in both sexes.

INCIDENCE Last Update: 2004-2006			
	MEN	WOMEN	
N° (average/annual)	118	78	
RATES	Crude	27.4	16.6
	Age adj (ITA81)	16.9	10.0
	Age adj (WORLD)	12.1	5.6
Age specific rates	► MEN	► WOMEN	

MORTALITY Last Update: 2004-2006			
	MEN	WOMEN	
N° (average/annual)	83	54	
RATES	Crude	19.2	11.5
	Age adj (ITA81)	11.8	6.6
	Age adj (WORLD)	8.4	3.4
Age specific rates	► MEN	► WOMEN	

SURVIVAL Last Update: 1995-1999 (f.u. 2004)		
	MEN	WOMEN
N° of cases	616	419
1 year observed	49.0	46.1
1 year relative	51.2	48.3
5 year observed	22.5	23.1
5 year relative	28.3	29.7
5 year standardized	28.0	31.0

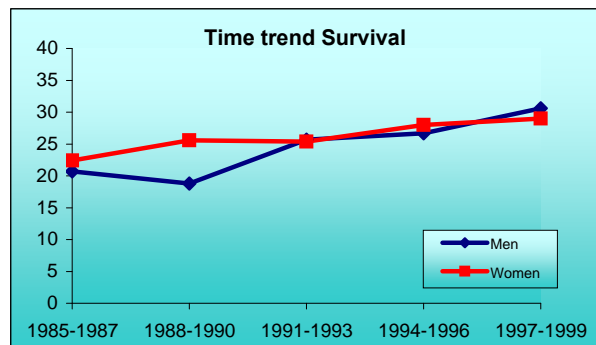
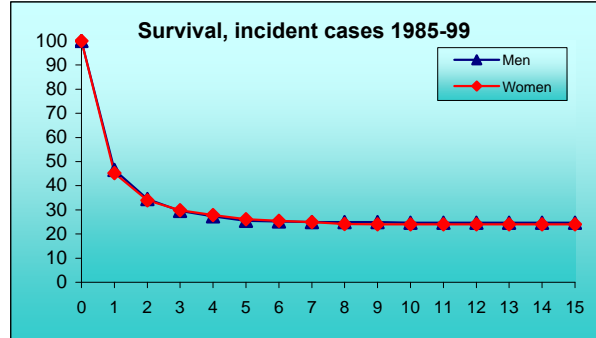
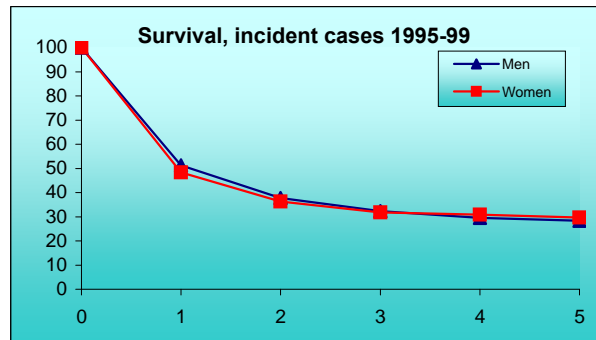
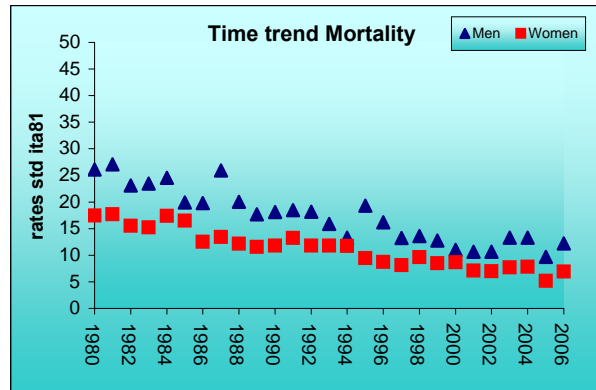
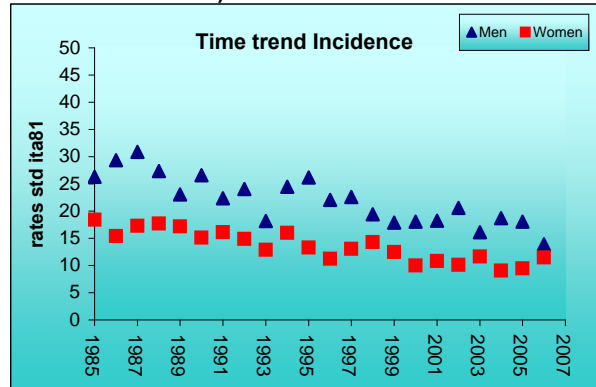
SURVIVAL Complete data: 1985-1999 (f.u. 2004)		
	MEN	WOMEN
N° of cases	2173	1541
10 year observed	15.0	14.6
10 year relative	24.7	24.0
15 year observed	12.1	10.6
15 year relative	24.7	24.0

5 year Relative Survival TRENDS (f.u. 2004)		
	MEN	WOMEN
1985-1987	20.7	22.4
1988-1990	18.8	25.6
1991-1993	25.7	25.4
1994-1996	26.7	28.0
1997-1999	30.6	29.0

PREVALENCE 31/12/2004		
N° of cases x 100.000		
	MEN	WOMEN
observed (since 1985)	110.4	67.0
overall (estimated)	122.6	78.2

INDICATORS / METHODS

INCIDENCE - MORTALITY - NUMBER OF CASES
AGE SPECIFIC RATES - CRUDE RATES - STANDARDIZED RATES -
SURVIVAL - OBSERVED SURVIVAL
RELATIVE SURVIVAL AND AGE-STANDARDIZED RELATIVE SURVIVAL -
PREVALENCE - NOTES



[PREVIOUS](#)

[HOME](#)

[LIST](#)

[NEXT](#)