

**Piedmont Cancer Registry**  
City of Turin (910,504 inhabitants at 31.12.2009)

**TONGUE - ICD: C 01-02**

**COMMENTS:**  
Incidence is substantially stable, while mortality is slightly decreasing in both sexes.  
Survival is improving in both sexes.

INCIDENCE Last Update: 2004-2006			
	MEN	WOMEN	
N° (average/annual)	16	10	
RATES	Crude	3.7	2.1
	Age adj (ITA81)	2.5	1.4
	Age adj (WORLD)	1.8	1.0
Age specific rates	► MEN	► WOMEN	

MORTALITY Last Update: 2004-2006			
	MEN	WOMEN	
N° (average/annual)	5	3	
RATES	Crude	1.2	0.7
	Age adj (ITA81)	0.7	0.5
	Age adj (WORLD)	0.5	0.3
Age specific rates	► MEN	► WOMEN	

SURVIVAL Last Update: 1995-1999 (f.u. 2004)		
	MEN	WOMEN
N° of cases	84	36
1 year observed	79.8	83.3
1 year relative	81.7	85.6
5 year observed	52.3	58.3
5 year relative	59.4	65.6
5 year standardized	58,0 (M & W)	

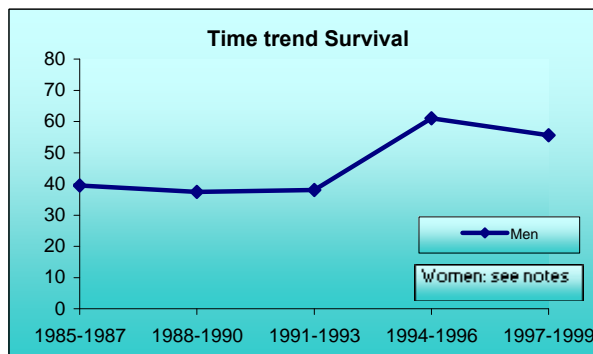
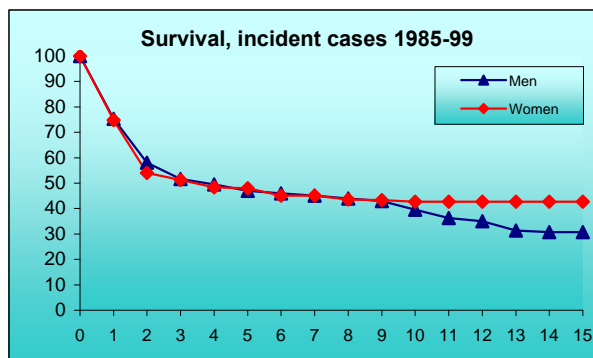
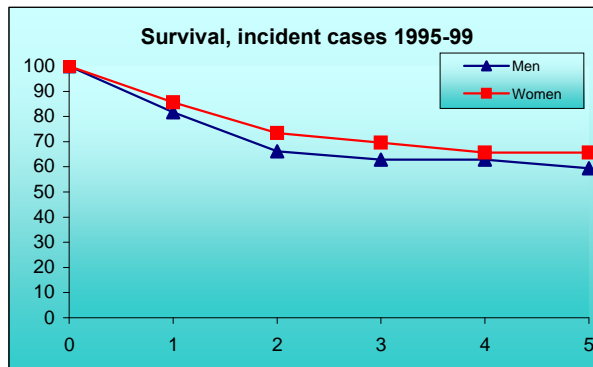
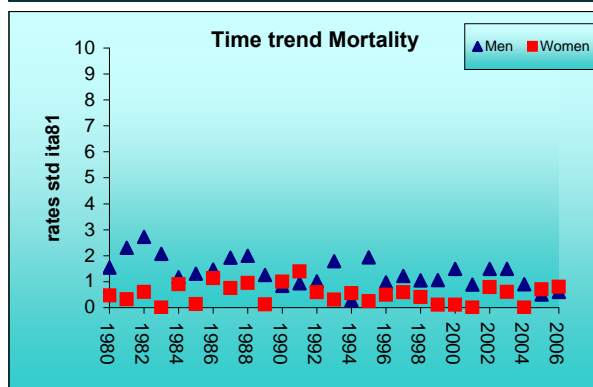
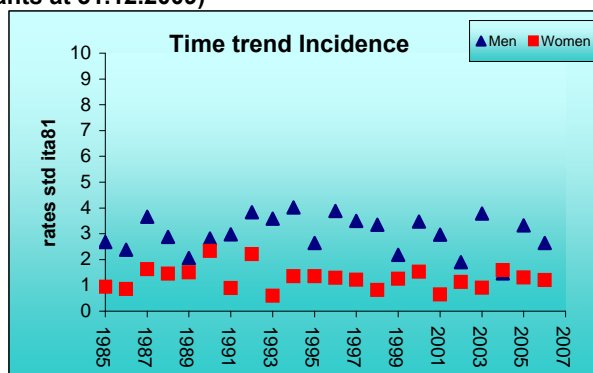
SURVIVAL Complete data: 1985-1999 (f.u. 2004)		
	MEN	WOMEN
N° of cases	285	129
10 year observed	29.4	31.1
10 year relative	39.6	42.7
15 year observed	19.5	28.3
15 year relative	30.7	42.7

5 year Relative Survival TRENDS (f.u. 2004)		
	MEN	WOMEN
1985-1987	39.5	19.8
1988-1990	37.4	39.8
1991-1993	38.1	61.1
1994-1996	61.0	44.0
1997-1999	55.6	74.3

PREVALENCE 31/12/2004		
N° of cases x 100.000		
	MEN	WOMEN
observed (since 1985)	25.7	14.0
overall (estimated)	29.4	18.2

**INDICATORS / METHODS**

INCIDENCE - MORTALITY - NUMBER OF CASES  
AGE SPECIFIC RATES - CRUDE RATES - STANDARDIZED RATES -  
SURVIVAL - OBSERVED SURVIVAL  
RELATIVE SURVIVAL AND AGE-STANDARDIZED RELATIVE SURVIVAL -  
PREVALENCE - NOTES



[PREVIOUS](#)

[HOME](#)

[LIST](#)

[NEXT](#)