

Registro dei Tumori Infantili del Piemonte 1970-2005 – Bambini 0-14 anni. Sopravvivenza cumulativa (percentuale) per periodo di diagnosi e tipo istologico. Il periodo 1970-75 è limitato alla Provincia di Torino.

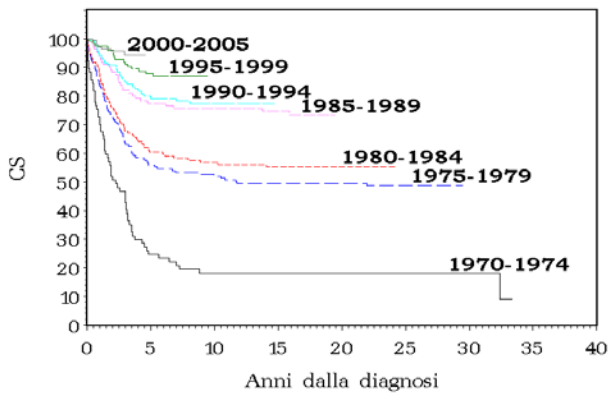
| ICCC      | TIPO ISTOLOGICO                  | PERIODO DI DIAGNOSI |                  |                  |                  |                  |                  |                  |           |      |      |      |      |                |     |           |      |      |      |     |           |      |      |     |           |      |      |     |           |       |     |           |       |  |
|-----------|----------------------------------|---------------------|------------------|------------------|------------------|------------------|------------------|------------------|-----------|------|------|------|------|----------------|-----|-----------|------|------|------|-----|-----------|------|------|-----|-----------|------|------|-----|-----------|-------|-----|-----------|-------|--|
|           |                                  | 1970-1974           |                  |                  |                  |                  |                  |                  | 1975-1979 |      |      |      |      |                |     | 1980-1984 |      |      |      |     | 1985-1989 |      |      |     | 1990-1994 |      |      |     | 1995-1999 |       |     | 2000-2005 |       |  |
|           |                                  | N                   | 5                | 10               | 15               | 20               | 25               | 30               | N         | 5    | 10   | 15   | 20   | 25             | N   | 5         | 10   | 15   | 20   | N   | 5         | 10   | 15   | N   | 3         | 5    | 10   | N   | 3         | 5     | N   | 3         | 5     |  |
| Ia        | Leucemia linfoblastica acuta     | 77                  | 24.7             | 18.2             | 18.2             | 18.2             | 18.2             | 18.2             | 152       | 55.9 | 52.0 | 49.3 | 49.3 | 48.7           | 134 | 60.4      | 56.7 | 55.2 | 55.2 | 111 | 77.5      | 75.7 | 74.8 | 120 | 85.0      | 79.2 | 77.5 | 124 | 91.1      | 87.8  | 146 | 94.3      | 94.3  |  |
| Ib        | Leucemia acuta non linfatica     | 12                  | 0.0 <sup>a</sup> | 0.0 <sup>a</sup> | 0.0 <sup>a</sup> | 0.0 <sup>a</sup> | 0.0 <sup>a</sup> | 0.0 <sup>a</sup> | 33        | 18.2 | 18.2 | 15.2 | 15.2 | 15.2           | 29  | 27.6      | 24.1 | 24.1 | 24.1 | 25  | 44.0      | 44.0 | 36.0 | 21  | 38.1      | 38.1 | 33.3 | 29  | 69.0      | 69.0  | 20  | 95.0      | 79.2  |  |
| IIa       | Morbo di Hodgkin                 | 18                  | 72.2             | 66.7             | 66.7             | 66.7             | 55.6             | 50.0             | 32        | 90.6 | 87.5 | 87.5 | 87.5 | 84.4           | 22  | 90.9      | 90.9 | 90.9 | 90.9 | 18  | 83.3      | 83.3 | 77.8 | 14  | 92.9      | 92.9 | 85.7 | 27  | 100.0     | 100.0 | 34  | 100.0     | 100.0 |  |
| IIb       | Linfoma Non-Hodgkin              | 11                  | 30.0             | 30.0             | 30.0             | 30.0             | 30.0             | 30.0             | 35        | 42.9 | 40.0 | 40.0 | 37.1 | 37.1           | 29  | 51.7      | 51.7 | 51.7 | 48.3 | 20  | 70.0      | 70.0 | 70.0 | 20  | 65.0      | 60.0 | 60.0 | 13  | 76.9      | 76.9  | 14  | 67.5      | 67.5  |  |
| III       | Tumori cerebrali                 | 62                  | 32.8             | 31.1             | 27.9             | 26.2             | 24.6             | 23.0             | 119       | 42.0 | 37.8 | 35.3 | 33.6 | 32.8           | 119 | 57.1      | 52.9 | 50.4 | 49.6 | 110 | 68.2      | 62.7 | 60.0 | 102 | 83.3      | 80.3 | 78.3 | 117 | 76.1      | 72.6  | 153 | 80.1      | 80.1  |  |
| IIIa      | Ependymoma                       | 4                   | 33.3             | 33.3             | 33.3             | 33.3             | 33.3             | 33.3             | 6         | 50.0 | 16.7 | 16.7 | 16.7 | - <sup>b</sup> | 16  | 43.8      | 43.8 | 31.3 | 31.3 | 8   | 50.0      | 50.0 | 50.0 | 16  | 81.3      | 81.3 | 67.7 | 18  | 72.2      | 61.1  | 22  | 81.0      | 81.0  |  |
| IIIb      | Astrocitoma                      | 22                  | 40.9             | 36.4             | 31.8             | 31.8             | 31.8             | 31.8             | 41        | 58.5 | 56.1 | 53.7 | 53.7 | 51.2           | 32  | 78.1      | 71.9 | 71.9 | 71.9 | 47  | 74.5      | 68.1 | 61.6 | 43  | 90.7      | 88.4 | 88.4 | 49  | 81.6      | 79.4  | 66  | 85.0      | 85.0  |  |
| IIIc      | Tumori neuroepiteliali primitivi | 11                  | 0.0 <sup>a</sup> | 0.0 <sup>a</sup> | 0.0 <sup>a</sup> | 0.0 <sup>a</sup> | 0.0 <sup>a</sup> | 0.0 <sup>a</sup> | 27        | 22.2 | 14.8 | 11.1 | 11.1 | 11.1           | 24  | 45.8      | 37.5 | 33.3 | 29.2 | 18  | 77.8      | 66.7 | 66.7 | 18  | 66.7      | 55.6 | 55.6 | 19  | 57.9      | 52.6  | 21  | 75.2      | 75.2  |  |
| IIId,e,f  | Altri tumori cerebrali           | 25                  | 40.0             | 40.0             | 36.0             | 32.0             | 28.0             | 24.0             | 45        | 37.8 | 37.8 | 35.6 | 31.1 | 31.1           | 47  | 53.2      | 51.1 | 51.1 | 51.1 | 37  | 59.5      | 56.8 | 56.8 | 25  | 84.0      | 84.0 | 84.0 | 31  | 80.6      | 80.6  | 44  | 74.5      | 74.5  |  |
| IV        | Tumori sistema nervoso simpatico | 18                  | 11.1             | 11.1             | 11.1             | 11.1             | 11.1             | 11.1             | 40        | 30.0 | 30.0 | 30.0 | 30.0 | 30.0           | 41  | 41.2      | 38.6 | 38.6 | 38.6 | 34  | 64.7      | 55.9 | 55.9 | 38  | 62.5      | 51.2 | 48.4 | 32  | 75.0      | 68.3  | 56  | 76.5      | 66.9  |  |
| V         | Retinoblastoma                   | 7                   | 57.1             | 57.1             | 57.1             | 42.9             | 42.9             | 42.9             | 12        | 83.3 | 83.3 | 83.3 | 83.3 | 83.3           | 10  | 60.0      | 60.0 | 60.0 | 60.0 | 5   | 100       | 100  | 100  | 15  | 93.3      | 93.3 | 93.3 | 16  | 93.8      | 87.5  | 12  | 91.7      | 91.7  |  |
| VIa       | Tumore di Wilms                  | 13                  | 38.5             | 38.5             | 38.5             | 38.5             | 38.5             | 38.5             | 31        | 64.5 | 64.5 | 64.5 | 64.5 | 64.5           | 25  | 80.0      | 80.0 | 80.0 | 80.0 | 15  | 86.7      | 86.7 | 86.7 | 18  | 66.7      | 66.7 | 66.7 | 23  | 91.3      | 91.3  | 29  | 92.0      | 92.0  |  |
| VIIIa     | Osteosarcoma                     | 12                  | 16.7             | 16.7             | 16.7             | 16.7             | 16.7             | 16.7             | 15        | 20.0 | 20.0 | 20.0 | 20.0 | 20.0           | 17  | 58.8      | 58.8 | 47.1 | 47.1 | 26  | 65.4      | 61.5 | 57.7 | 13  | 61.5      | 61.5 | 53.8 | 3   | 66.7      | 66.7  | 18  | 51.1      | 51.1  |  |
| VIIIc     | Sarcoma di Ewing                 | 3                   | 0.0 <sup>a</sup> | 0.0 <sup>a</sup> | 0.0 <sup>a</sup> | 0.0 <sup>a</sup> | 0.0 <sup>a</sup> | 0.0 <sup>a</sup> | 7         | 14.3 | 14.3 | 14.3 | 14.3 | 14.3           | 14  | 50.0      | 35.7 | 35.7 | 35.7 | 12  | 50.0      | 50.0 | 50.0 | 10  | 90.0      | 90.0 | 80.0 | 8   | 75.0      | 75.0  | 12  | 73.3      | 73.3  |  |
| IXa       | Rabdomiosarcoma                  | 4                   | 25.0             | 25.0             | 25.0             | 25.0             | 25.0             | - <sup>b</sup>   | 18        | 66.7 | 50.0 | 50.0 | 50.0 | 50.0           | 18  | 72.2      | 66.7 | 66.7 | 66.7 | 18  | 66.7      | 61.1 | 61.1 | 15  | 80.0      | 66.7 | 66.7 | 13  | 69.2      | 61.5  | 19  | 82.9      | 82.9  |  |
| IXb,c,d,e | Fibrosarcoma e altri sarcomi     | 14                  | 35.7             | 35.7             | 35.7             | 35.7             | 35.7             | 35.7             | 14        | 50.0 | 50.0 | 50.0 | 50.0 | 50.0           | 8   | 62.5      | 62.5 | 50.0 | 50.0 | 14  | 50.0      | 50.0 | 50.0 | 15  | 66.7      | 66.7 | 60.0 | 14  | 78.6      | 64.3  | 20  | 68.2      | 68.2  |  |
|           | Altri tumori                     | 55                  | 30.9             | 29.1             | 27.3             | 23.6             | 23.6             | 23.6             | 59        | 37.3 | 35.6 | 35.6 | 35.6 | 35.6           | 41  | 36.6      | 36.6 | 36.6 | 36.6 | 56  | 62.2      | 60.4 | 60.4 | 55  | 72.2      | 72.2 | 68.5 | 51  | 90.2      | 90.2  | 78  | 82.8      | 82.8  |  |
|           | Tutti i tumori                   | 306                 | 29.9             | 27.3             | 26.3             | 25.0             | 24.0             | 23.4             | 567       | 48.0 | 45.0 | 43.6 | 43.0 | 42.5           | 507 | 56.2      | 53.2 | 51.6 | 51.2 | 464 | 68.5      | 65.5 | 63.7 | 456 | 76.7      | 72.9 | 70.2 | 470 | 83.6      | 80.6  | 611 | 84.3      | 82.4  |  |

<sup>a</sup> Tutti i casi con tempi di sopravvivenza inferiori

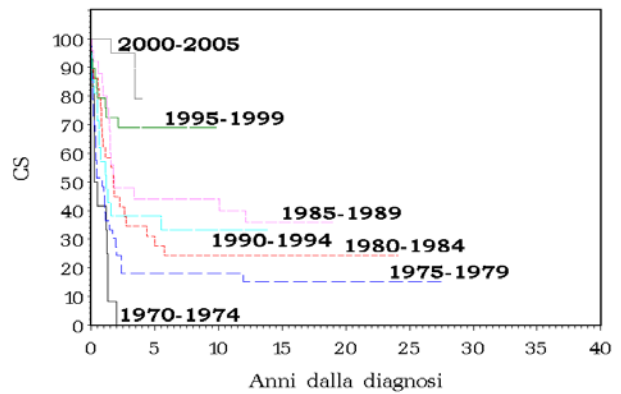
<sup>b</sup> Tutti i casi con osservazione troncata

Registro dei Tumori Infantili del Piemonte 1970-2005 – Bambini 0-14 anni. Sopravvivenza cumulativa (CS) per periodo di diagnosi e tipo istologico.

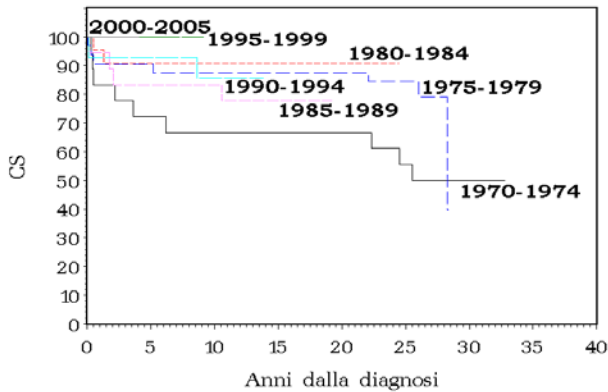
**Leucemia linfatica acuta**



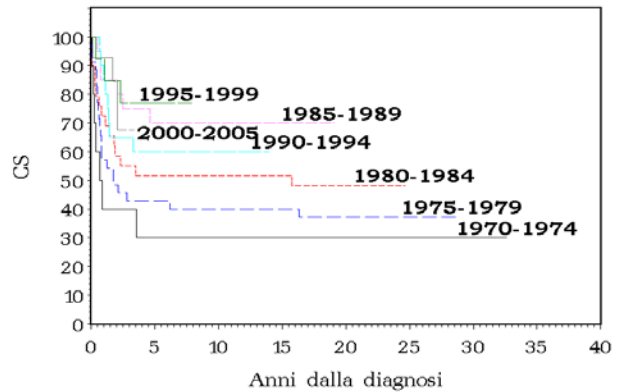
**Leucemia acuta non linfatica**



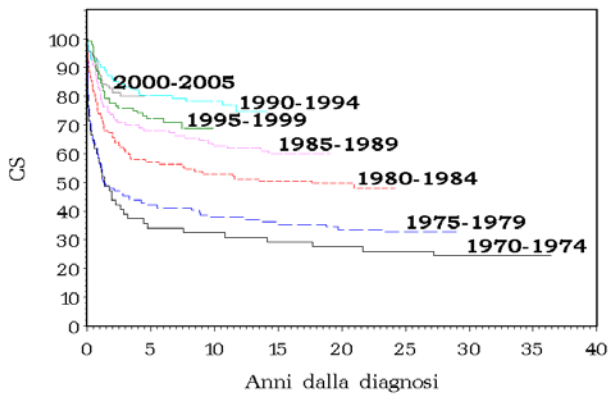
**Linfoma di Hodgkin**



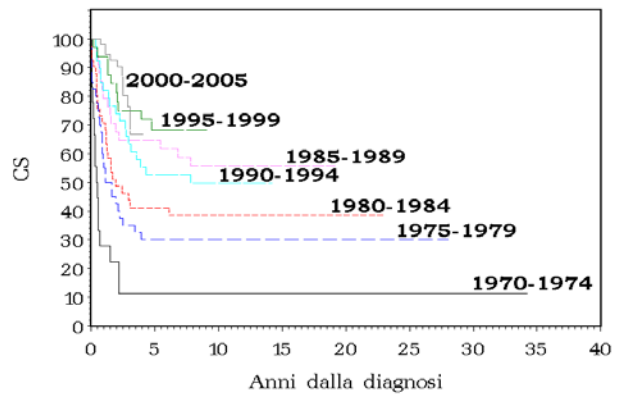
**Linfoma non-Hodgkin**



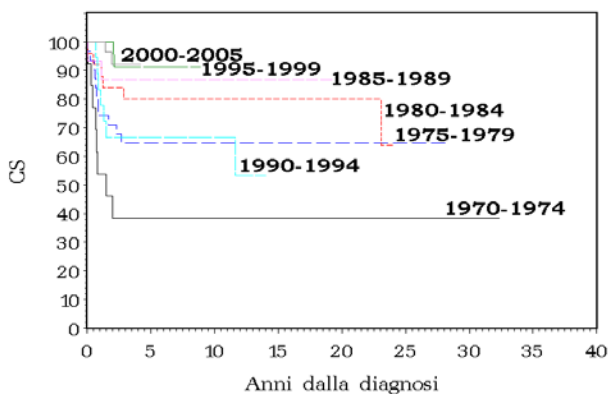
**Tumori cerebrali**



**Tumori del sistema nervoso simpatico**



**Tumore di Wilms**



**Tutti i tumori**

