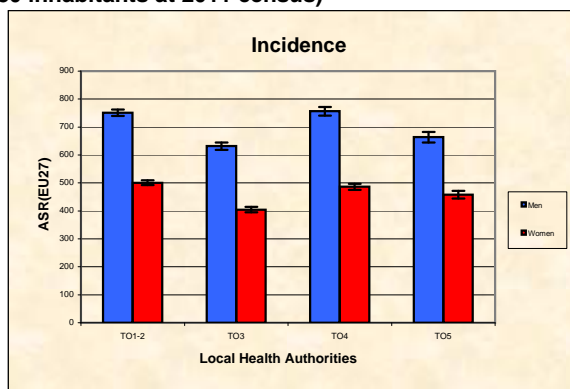


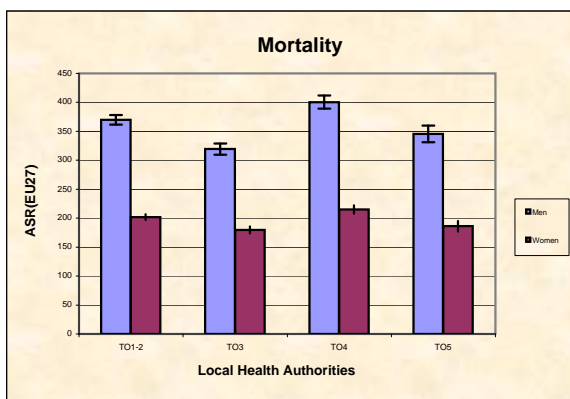
Piemont Cancer Registry
Turin Metropolitan area (2-247-780 inhabitants at 2011 census)

ALL SITES BUT SKIN CARCINOMA

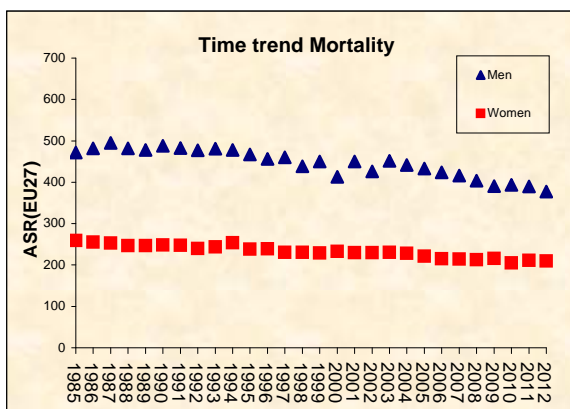
COMMENTS:
 Overall cancer burden in the Turin Metropolitan area has a slightly higher occurrence in urban areas. This is due to the concurrent effects of cancer caused by both environmental and lifestyle factors. For some cancers (see site specific details) also an higher diagnostic attention conjurated to purport higher occurrence rates in urban areas. However, overall cancer risk has to be put in the perspective of declining rates as also showed by decreasing mortality rates in both men and women. Survival is better in women than in men, because of case mixing and it is comparable to that observed across Italy and Europe.



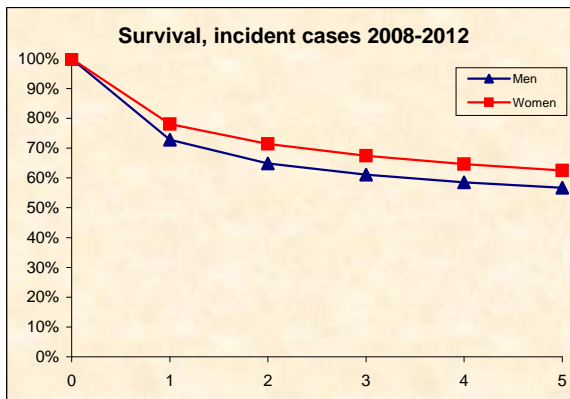
INCIDENCE Last Update: 2008-2012		
	MEN	WOMEN
N° (average/annual)	8145	6654
RATES		
Crude	754,3	572,8
Age adj (EU27)	736,8	481,7
Age adj (WORLD)	333,7	255,9
Sub-area comparisons		
Local Health Authorities (ASL)		
Age adj(EU27)		
ASL TO1-2	751,0	500,9
ASL TO3	631,6	404,7
ASL TO4	756,4	486,3
ASL TO5	663,8	457,9



MORTALITY Last Update: 2008-2012		
	MEN	WOMEN
N° (average/annual)	3957	3028
RATES		
Crude	366,5	260,6
Age adj (EU27)	376,4	203,7
Age adj (WORLD)	138,9	82,7
Sub-area comparisons		
Local Health Authorities (ASL)		
Age adj(EU27)		
ASL TO1-2	369,9	201,9
ASL TO3	319,3	179,8
ASL TO4	400,5	215,2
ASL TO5	345,6	186,1



SURVIVAL: 2008-2012 (f.u. 31/12/2015)		
	MEN	WOMEN
N° of cases	36870	31725
1 year observed	69,2%	75,2%
1 year relative	72,8%	78,1%
5 year observed	47,7%	55,9%
5 year relative	56,7%	62,5%
5 year standardized	58,1%	62,9%



PREVALENCE 31/12/2012		
N° of cases x 100.000		
	MEN	WOMEN
observed (2008-2012)	2280,9	1867,6
overall cohort estimation	5536,0	5279,5