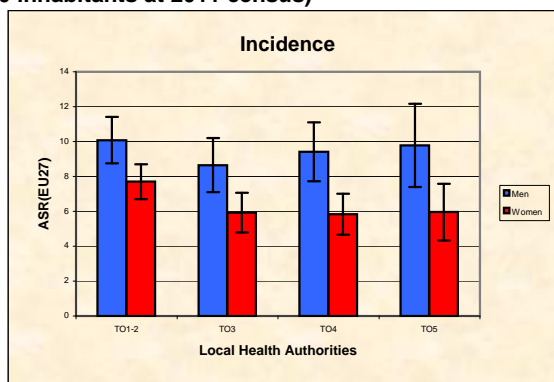
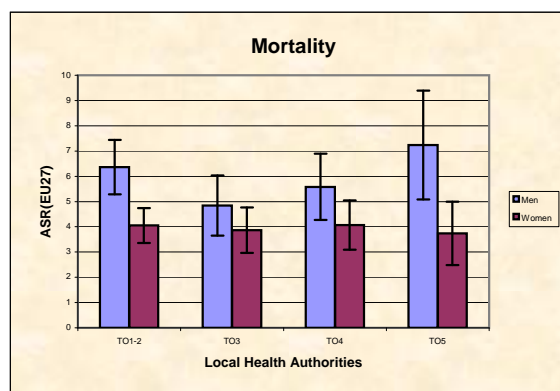


Piedmont Cancer Registry
Turin Metropolitan area (2-247-780 inhabitants at 2011 census)

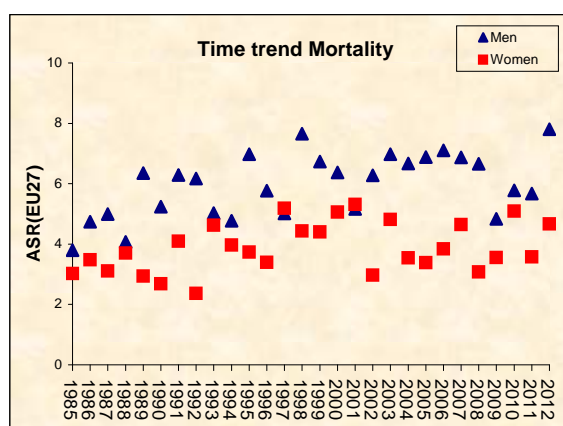
| MYELOMA - ICD-10: C88, 90 | |
|---|--|
| COMMENTS: Myeloma usually occurs at old ages, with a median onset age at 70 years. Incidence and mortality are stable and without main geographical patterns. Survival is still poor. | |



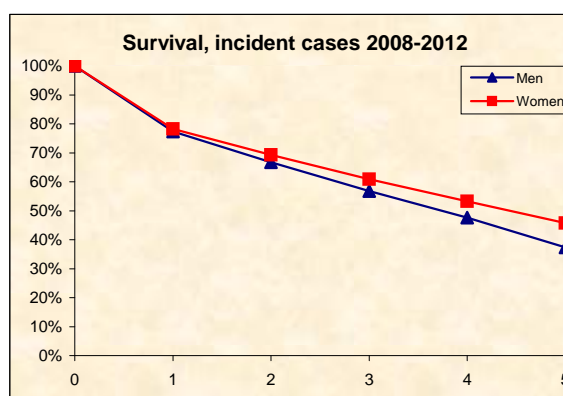
| INCIDENCE Last Update: 2008-2012 | | | |
|---|-----------------|------|-------|
| | | MEN | WOMEN |
| N° (average/annual) | | 109 | 101 |
| RATES | Crude | 9,3 | 8,6 |
| | Age adj (EU27) | 8,4 | 6,8 |
| | Age adj (WORLD) | 3,8 | 2,9 |
| Sub-area comparisons | | | |
| Local Health Authorities (ASL) | | | |
| Age adj(EU27) | ASL TO1-2 | 10,1 | 7,7 |
| | ASL TO3 | 8,7 | 5,9 |
| | ASL TO4 | 9,4 | 5,8 |
| | ASL TO5 | 9,8 | 6,0 |



| MORTALITY Last Update: 2008-2012 | | | |
|---|-----------------|-----|-------|
| | | MEN | WOMEN |
| N° (average/annual) | | 64 | 62 |
| RATES | Crude | 5,4 | 5,3 |
| | Age adj (EU27) | 5,0 | 4,0 |
| | Age adj (WORLD) | 1,8 | 1,4 |
| Sub-area comparisons | | | |
| Local Health Authorities (ASL) | | | |
| Age adj(EU27) | ASL TO1-2 | 6,4 | 4,1 |
| | ASL TO3 | 4,8 | 3,9 |
| | ASL TO4 | 5,6 | 4,1 |
| | ASL TO5 | 7,2 | 3,7 |



| SURVIVAL: 2008-2012 (f.u. 31/12/2015) | | |
|--|-------|-------|
| | MEN | WOMEN |
| N° of cases | 532 | 484 |
| 1 year observed | 73,9% | 75,6% |
| 1 year relative | 77,4% | 78,3% |
| 5 year observed | 32,7% | 41,3% |
| 5 year relative | 37,3% | 45,7% |
| 5 year standardized | 40,5% | 52,3% |



| PREVALENCE 31/12/2012 | | |
|------------------------------|------|-------|
| N° of cases x 100.000 | | |
| | MEN | WOMEN |
| observed (2008-2012) | 27,7 | 25,2 |
| overall cohort estimation | 49,3 | 39,7 |