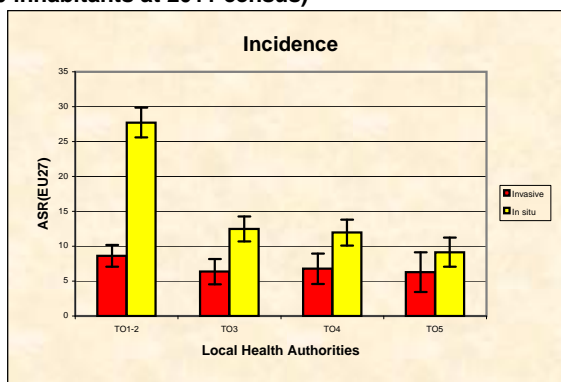
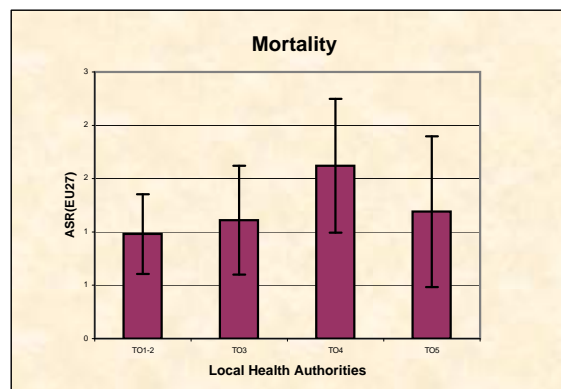


Piedmont Cancer Registry
Turin Metropolitan area (2-247-780 inhabitants at 2011 census)

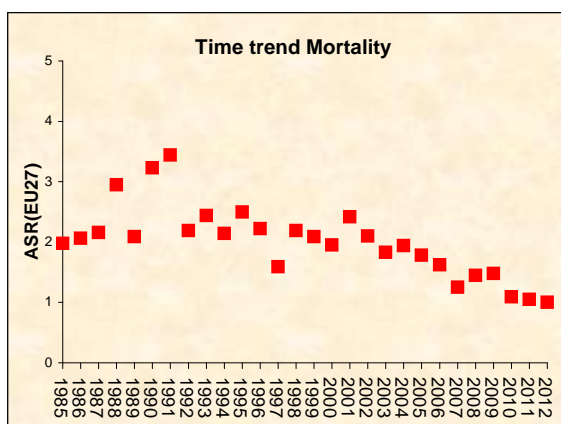
CERVIX UTERI - ICD-10: C 53	
COMMENTS:	
Half a century of early diagnosis, then organised screening programs and most recently vaccination have reduced cervix cancer to a rare cancer. Variations of in situ lesions also reflect differences in screening activities with higher occurrence where health care facilities are more abundant.	



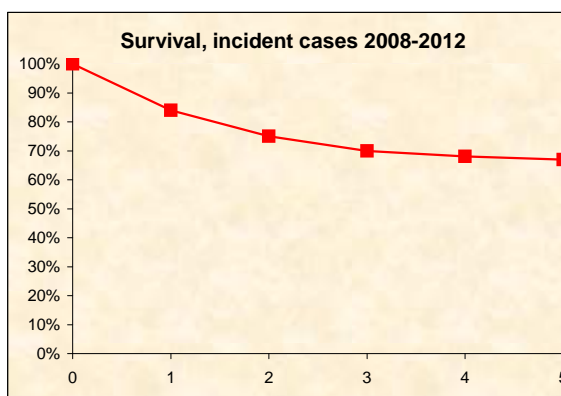
INCIDENCE Last Update: 2008-2012			
WOMEN			
N°(average/annual)		In situ	Invasive
		270	101
RATES	Crude	23,3	8,7
	Age adj (EU27)	22,7	7,7
	Age adj (WORLD)	21,1	5,0
Sub-area comparisons			
Local Health Authorities (ASL)			
Age adj(EU27)	ASL TO1-2	27,72	8,6
	ASL TO3	12,47	6,4
	ASL TO4	11,96	6,8
	ASL TO5	9,15	6,3



MORTALITY Last Update: 2008-2012		
WOMEN		
N°(average/annual)		17
RATES	Crude	1,4
	Age adj (EU27)	1,2
	Age adj (WORLD)	0,6
Sub-area comparisons		
Local Health Authorities (ASL)		
Age adj(EU27)	ASL TO1-2	1,0
	ASL TO3	1,1
	ASL TO4	1,6
	ASL TO5	1,2



SURVIVAL: 2008-2012 (f.u. 31/12/2015)	
WOMEN	
N°of cases	506
1 year observed	83,0%
1 year relative	84,0%
5 year observed	63,0%
5 year relative	66,9%
5 year standardized	59,4%



PREVALENCE 31/12/2012	
N° of cases x 100.000	
WOMEN	
observed (2008-2012)	31,3
overall cohort estimation	109,8