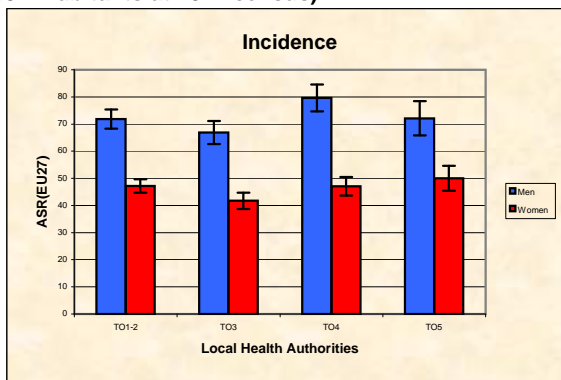
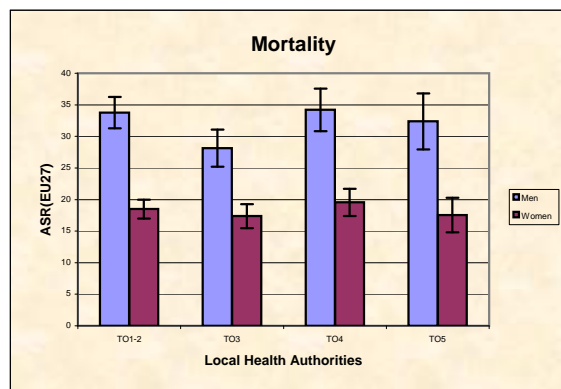


Piedmont Cancer Registry
Turin Metropolitan area (2-247-780 inhabitants at 2011 census)

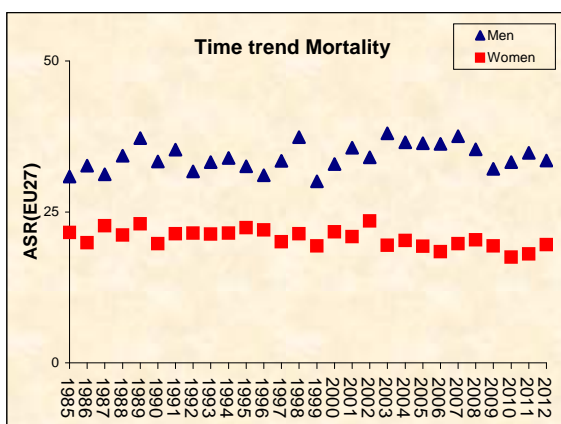
COLON - ICD-10: C 18	
COMMENTS:	
Colon cancer is one of the most frequent in our populations: the risk of developing it lifelong (up to 84 years of age) is 7.13% in men and 4.49% in women. Mortality is constant in both men and women and survival at 5 years is well above 60% in both sexes.	



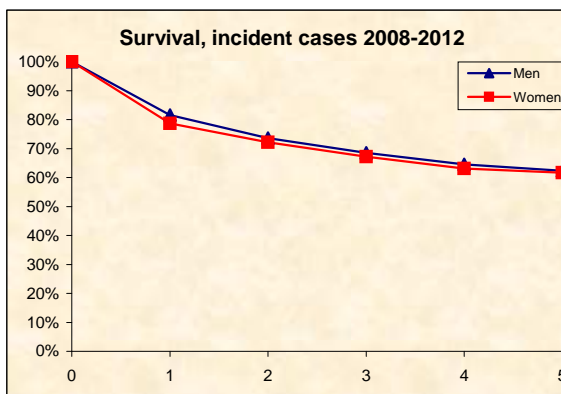
INCIDENCE Last Update: 2008-2012			
		MEN	WOMEN
N° (average/annual)		695	609
RATES	Crude	59,0	51,8
	Age adj (EU27)	53,5	41,1
	Age adj (WORLD)	22,6	18,0
Sub-area comparisons			
Local Health Authorities (ASL)			
Age adj(EU27)	ASL TO1-2	71,9	47,1
	ASL TO3	66,9	41,7
	ASL TO4	79,6	47,1
	ASL TO5	72,1	50,0



MORTALITY Last Update: 2008-2012			
		MEN	WOMEN
N° (average/annual)		348	287
RATES	Crude	29,5	24,4
	Age adj (EU27)	27,1	18,3
	Age adj (WORLD)	9,8	6,9
Sub-area comparisons			
Local Health Authorities (ASL)			
Age adj(EU27)	ASL TO1-2	33,8	18,5
	ASL TO3	28,1	17,4
	ASL TO4	34,2	19,6
	ASL TO5	32,4	17,5



SURVIVAL: 2008-2012 (f.u. 31/12/2015)		
	MEN	WOMEN
N° of cases	3852	3174
1 year observed	77,4%	75,3%
1 year relative	81,6%	78,6%
5 year observed	50,5%	52,5%
5 year relative	62,4%	61,7%
5 year standardized	63,8%	64,1%



PREVALENCE 31/12/2012		
N° of cases x 100.000		
	MEN	WOMEN
observed (2008-2012)	252,5	192,4
overall cohort estimation	613,7	500,7