

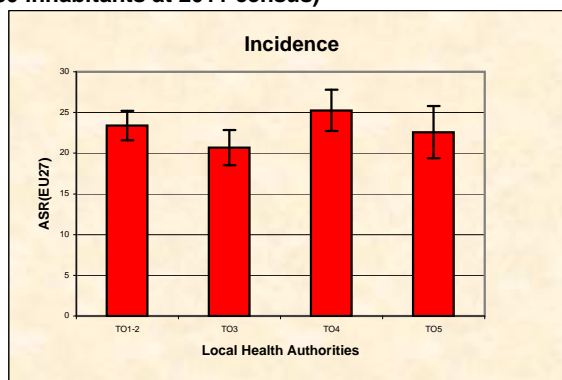
Piedmont Cancer Registry

Turin Metropolitan area (2-247-780 inhabitants at 2011 census)

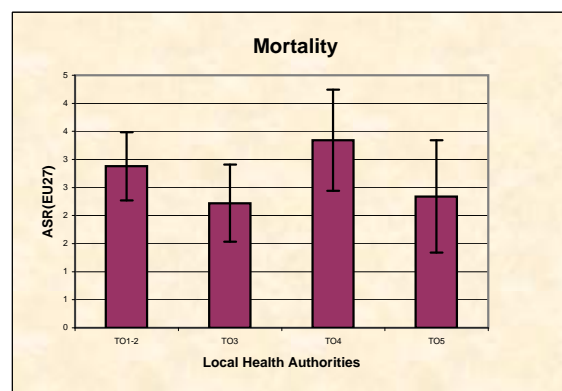
CORPUS UTERI - ICD-10: C 54

COMMENTS:

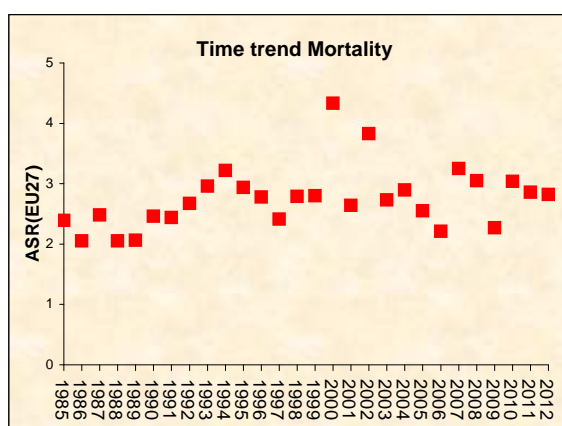
Every year more than 300 women have a new diagnosis of corpus uteri cancer in the Turin Metropolitan area, without significant variations both in incidence or mortality within the studied area.



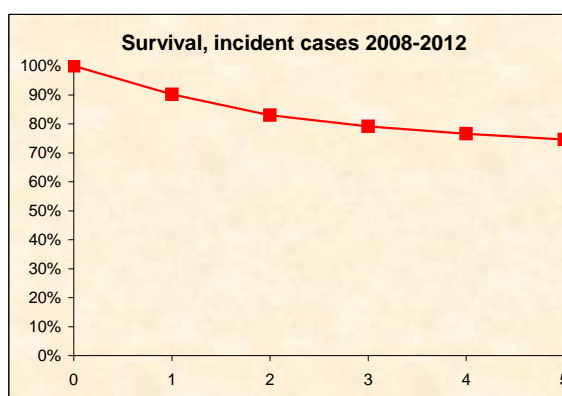
INCIDENCE Last Update: 2008-2012		
N° (average/annual)		330
RATES	Crude	28,1
	Age adj (EU27)	24,1
	Age adj (WORLD)	12,9
Sub-area comparisons		
Local Health Authorities (ASL)		
Age adj(EU27)	ASL TO1-2	23,4
	ASL TO3	20,7
	ASL TO4	25,3
	ASL TO5	22,6



MORTALITY Last Update: 2008-2012		
N° (average/annual)		42
RATES	Crude	3,5
	Age adj (EU27)	2,7
	Age adj (WORLD)	1,1
Sub-area comparisons		
Local Health Authorities (ASL)		
Age adj(EU27)	ASL TO1-2	2,9
	ASL TO3	2,2
	ASL TO4	3,3
	ASL TO5	2,3



SURVIVAL: 2008-2012 (f.u. 31/12/2015)		
		WOMEN
N° of cases		1592
1 year observed		88,2%
1 year relative		90,1%
5 year observed		69,0%
5 year relative		74,6%
5 year standardized		73,8%



PREVALENCE 31/12/2012		
		WOMEN
N° of cases x 100.000		
observed (2008-2012)		31,3
overall cohort estimation		109,8