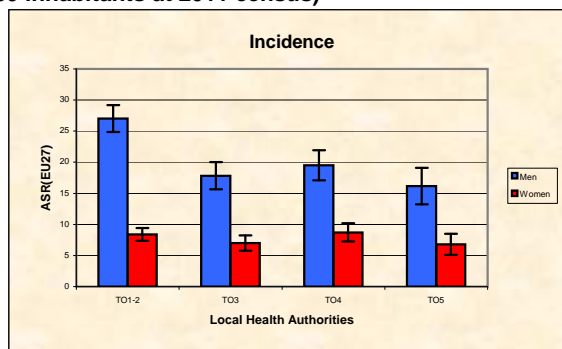


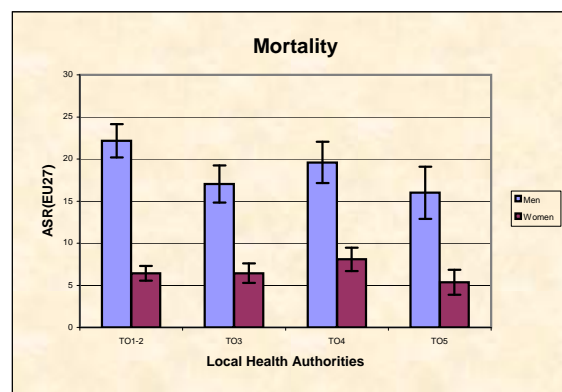
Piedmont Cancer Registry
Turin Metropolitan area (2-247-780 inhabitants at 2011 census)

LIVER - ICD-10: C 22

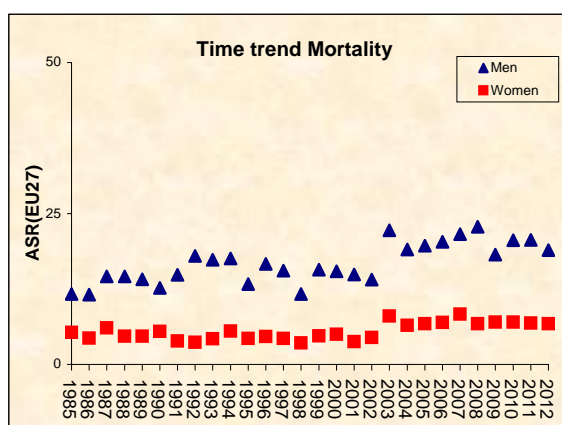
COMMENTS:
 Although liver cancer has a medium to low incidence in our populations, prognosis remains quite poor. A slight decrease in incidence and mortality in recent years gives some hopes for the future.



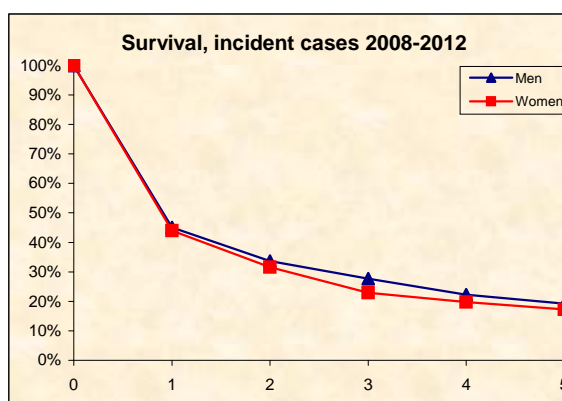
INCIDENCE Last Update: 2008-2012		
	MEN	WOMEN
N°(average/annual)	291	154
RATES	Crude	24,6
	Age adj (EU27)	22,4
	Age adj (WORLD)	10,4
Sub-area comparisons		
Local Health Authorities (ASL)		
Age adj(EU27)	ASL TO1-2	27,0
	ASL TO3	17,8
	ASL TO4	19,5
	ASL TO5	16,2



MORTALITY Last Update: 2008-2012		
	MEN	WOMEN
N°(average/annual)	220	104
RATES	Crude	18,6
	Age adj (EU27)	16,9
	Age adj (WORLD)	7,0
Sub-area comparisons		
Local Health Authorities (ASL)		
Age adj(EU27)	ASL TO1-2	22,2
	ASL TO3	17,0
	ASL TO4	19,6
	ASL TO5	16,0



SURVIVAL: 2008-2012 (f.u. 31/12/2015)		
	MEN	WOMEN
N° of cases	1194	534
1 year observed	41,4%	39,7%
1 year relative	45,1%	44,0%
5 year observed	16,1%	14,5%
5 year relative	19,3%	17,3%
5 year standardized	20,4%	20,4%



PREVALENCE 31/12/2012		
N° of cases x 100.000		
	MEN	WOMEN
observed (2008-2012)	47,1	28,2
overall cohort estimation	126,7	83,4