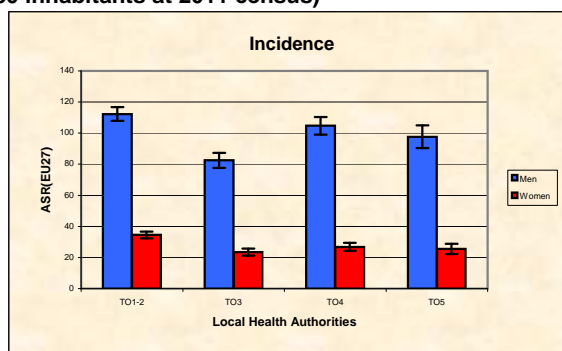
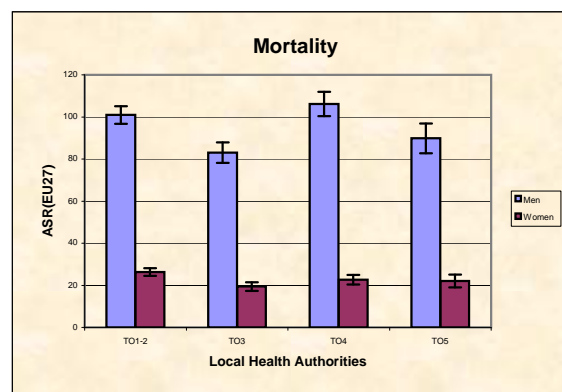


**Piedmont Cancer Registry**  
Turin Metropolitan area (2-247-780 inhabitants at 2011 census)

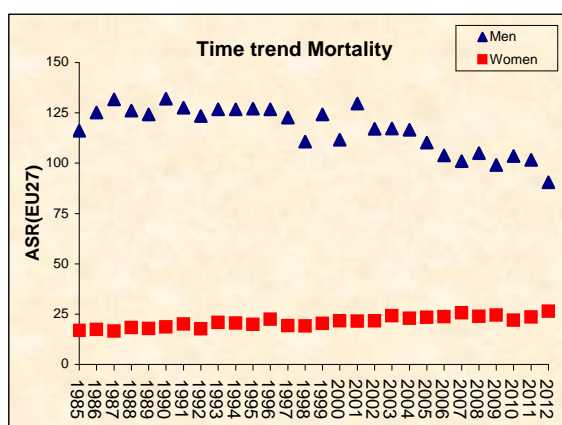
<b>LUNG - ICD-10: C 33-34</b>	
<b>COMMENTS:</b>	
Lung cancer is still the second most common cancer in men, and the third in women. However, while in men both mortality and incidence are decreasing, in women lung cancer occurrence is still on the rise when considering the whole population of the Turin Metropolitan area.	



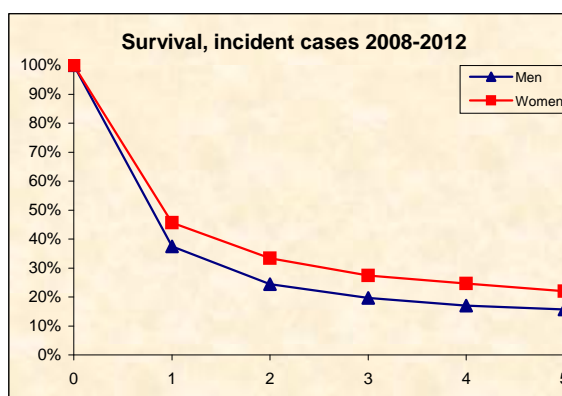
<b>INCIDENCE Last Update: 2008-2012</b>			
		MEN	WOMEN
N° (average/annual)		1125	412
RATES	Crude	95,4	35,1
	Age adj (EU27)	86,4	28,4
	Age adj (WORLD)	36,2	13,3
<b>Sub-area comparisons</b>			
<b>Local Health Authorities (ASL)</b>			
Age adj (EU27)	ASL TO1-2	112,3	34,5
	ASL TO3	82,5	23,4
	ASL TO4	104,7	26,9
	ASL TO5	97,6	25,6



<b>MORTALITY Last Update: 2008-2012</b>			
		MEN	WOMEN
N° (average/annual)		1087	351
RATES	Crude	92,2	29,9
	Age adj (EU27)	83,4	23,5
	Age adj (WORLD)	33,5	10,0
<b>Sub-area comparisons</b>			
<b>Local Health Authorities (ASL)</b>			
Age adj (EU27)	ASL TO1-2	101,0	26,3
	ASL TO3	83,0	19,5
	ASL TO4	106,2	22,7
	ASL TO5	89,8	22,1



<b>SURVIVAL: 2008-2012 (f.u. 31/12/2015)</b>		
	MEN	WOMEN
N° of cases	5500	1986
1 year observed	34,8%	42,8%
1 year relative	37,5%	45,6%
5 year observed	13,1%	19,5%
5 year relative	15,7%	22,0%
5 year standardized	17,1%	23,4%



<b>PREVALENCE 31/12/2012</b>		
<b>N° of cases x 100.000</b>		
	MEN	WOMEN
observed (2008-2012)	121,8	53,9
overall cohort estimation	208,8	86,4