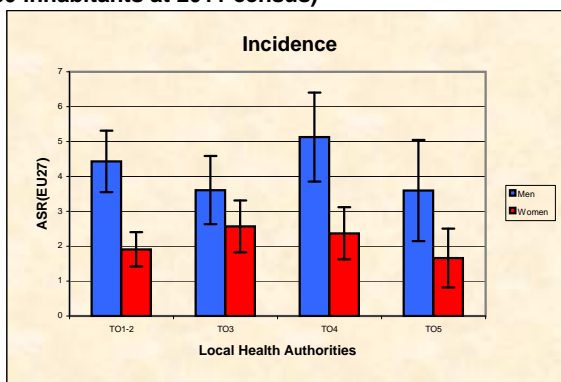
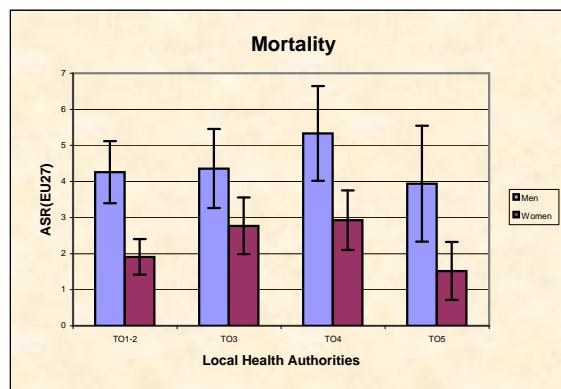


**Piedmont Cancer Registry**  
**Turin Metropolitan area (2-247-780 inhabitants at 2011 census)**

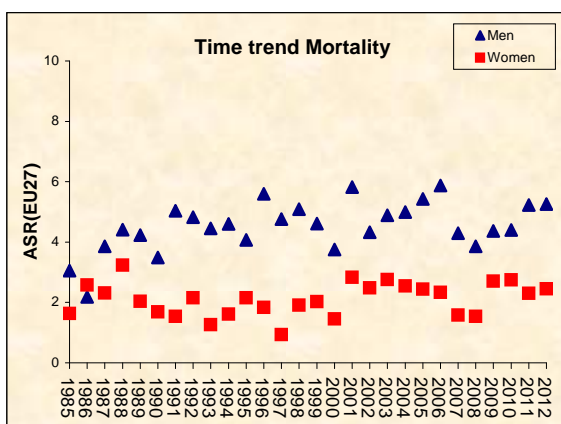
<b>MESOTHELIOMA - ICD-10: C 45</b>	
<b>COMMENTS:</b>	
Occurrence of this highly lethal neoplasm is associated to the diffusion of a specific exposure to asbestos fibers that may have occurred at work or in the life environment. The particular long latency for mesothelioma still takes its toll in our populations both in men and women, well after the asbestos ban in 1992.	



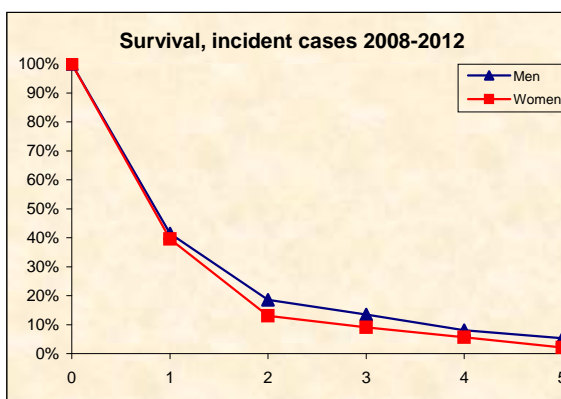
<b>INCIDENCE Last Update: 2008-2012</b>			
		MEN	WOMEN
N° (average/annual)		50	33
RATES	Crude	4,2	2,8
	Age adj (EU27)	3,8	2,2
	Age adj (WORLD)	1,5	0,9
<b>Sub-area comparisons</b>			
<b>Local Health Authorities (ASL)</b>			
Age adj(EU27)	ASL TO1-2	4,4	1,9
	ASL TO3	3,6	2,6
	ASL TO4	5,1	2,4
	ASL TO5	3,6	1,7



<b>MORTALITY Last Update: 2008-2012</b>			
		MEN	WOMEN
N° (average/annual)		50	35
RATES	Crude	4,2	3,0
	Age adj (EU27)	3,8	2,3
	Age adj (WORLD)	1,4	0,9
<b>Sub-area comparisons</b>			
<b>Local Health Authorities (ASL)</b>			
Age adj(EU27)	ASL TO1-2	4,3	1,9
	ASL TO3	4,4	2,8
	ASL TO4	5,3	2,9
	ASL TO5	3,9	1,5



<b>SURVIVAL: 2008-2012 (f.u. 31/12/2015)</b>		
	MEN	WOMEN
N° of cases	235	151
1 year observed	39,7%	38,4%
1 year relative	41,5%	39,6%
5 year observed	4,7%	1,9%
5 year relative	5,3%	2,1%
5 year standardized	6,8%	2,6%



<b>PREVALENCE 31/12/2012</b>		
<b>N° of cases x 100.000</b>		
	MEN	WOMEN
observed (2008-2012)	3,5	1,7
overall cohort estimation	4,2	2,5