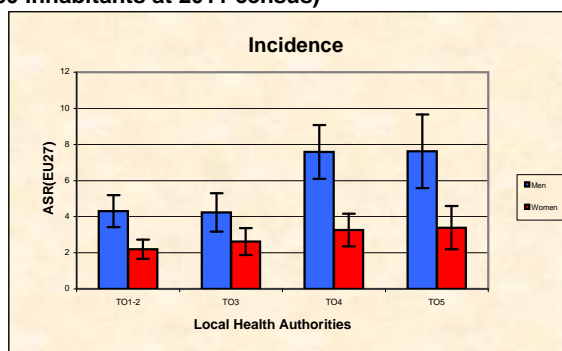
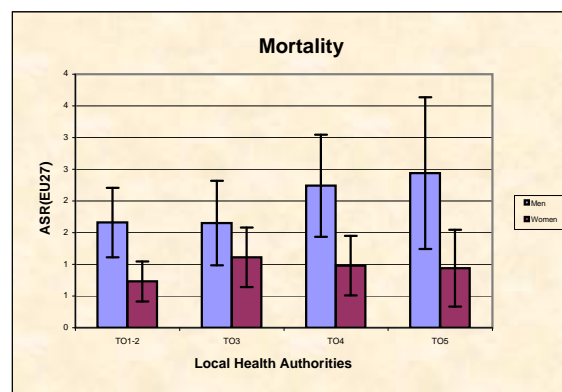


Piedmont Cancer Registry
Turin Metropolitan area (2-247-780 inhabitants at 2011 census)

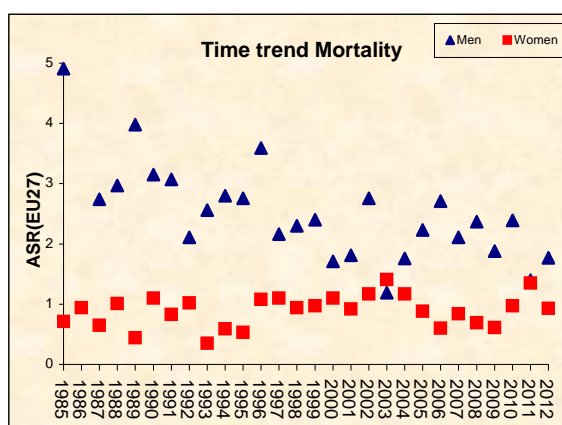
MOUTH - ICD-10: C03-06	
COMMENTS:	
Differences in incidence and mortality, mainly observed in men, are due to the different diffusion of the main risk factors for this type of cancer: tobacco smoking and alcohol consumption. HPV virus can also play a role in explaining occurrence, but less important. Some types of mouth cancer are rather aggressive, explaining survival reaching only intermediate levels.	



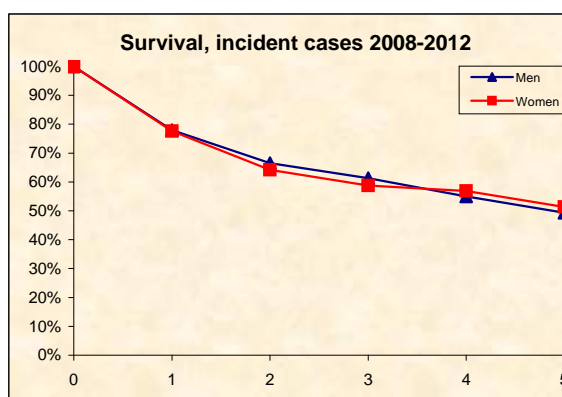
INCIDENCE Last Update: 2008-2012			
		MEN	WOMEN
N° (average/annual)		72	43
RATES	Crude	6,1	3,6
	Age adj (EU27)	5,6	2,9
	Age adj (WORLD)	3,0	1,4
Sub-area comparisons			
Local Health Authorities (ASL)			
Age adj (EU27)	ASL TO1-2	4,3	2,2
	ASL TO3	4,2	2,6
	ASL TO4	7,6	3,3
	ASL TO5	7,6	3,4



MORTALITY Last Update: 2008-2012			
		MEN	WOMEN
N° (average/annual)		22	14
RATES	Crude	1,8	1,2
	Age adj (EU27)	1,7	0,9
	Age adj (WORLD)	0,8	0,4
Sub-area comparisons			
Local Health Authorities (ASL)			
Age adj (EU27)	ASL TO1-2	1,7	0,7
	ASL TO3	1,7	1,1
	ASL TO4	2,2	1,0
	ASL TO5	2,4	0,9



SURVIVAL: 2008-2012 (f.u. 31/12/2015)		
	MEN	WOMEN
N° of cases	295	189
1 year observed	76,2%	75,0%
1 year relative	77,9%	77,6%
5 year observed	45,1%	45,2%
5 year relative	49,3%	51,3%
5 year standardized	47,6%	54,8%



PREVALENCE 31/12/2012		
N° of cases x 100.000		
	MEN	WOMEN
observed (2008-2012)	18,1	9,7
overall cohort estimation	40,1	24,0