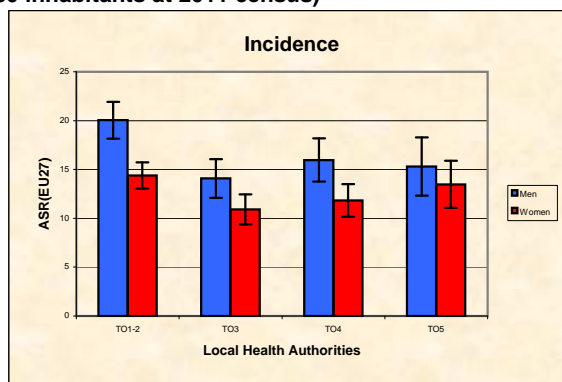
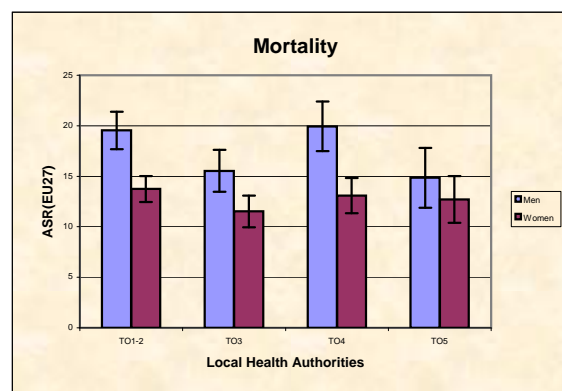


Piedmont Cancer Registry
Turin Metropolitan area (2-247-780 inhabitants at 2011 census)

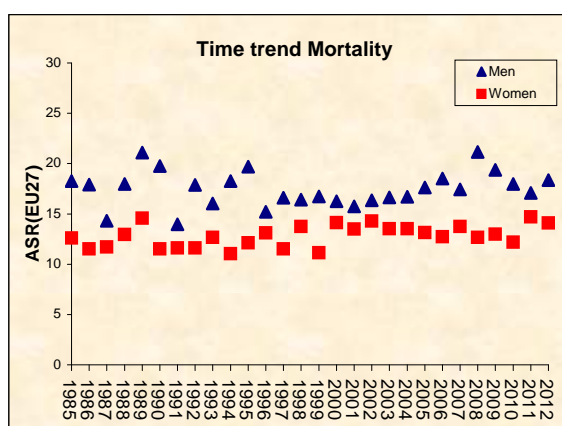
PANCREAS - ICD-10: C 25	
COMMENTS:	
Early diagnosis of pancreatic cancer is difficult for this still lethal cancer. A slightly incidence excess in Turin could be linked to a deeper diagnostic attention typical of urban areas with high density of health care facilities. However, this does not translate in a longer survival.	



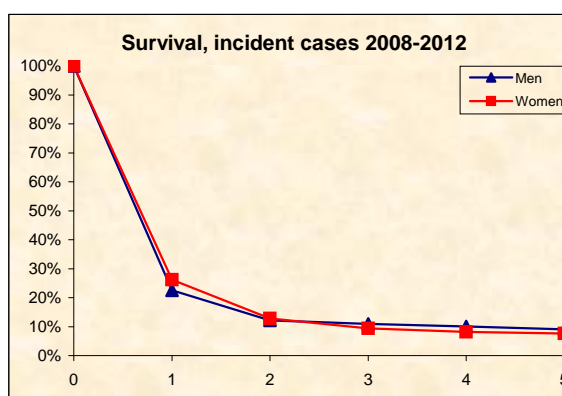
INCIDENCE Last Update: 2008-2012			
		MEN	WOMEN
N° (average/annual)		196	202
RATES	Crude	16,6	17,2
	Age adj (EU27)	15,2	13,2
	Age adj (WORLD)	6,6	5,3
Sub-area comparisons			
Local Health Authorities (ASL)			
Age adj(EU27)	ASL TO1-2	20,0	14,4
	ASL TO3	14,1	10,9
	ASL TO4	16,0	11,8
	ASL TO5	15,3	13,5



MORTALITY Last Update: 2008-2012			
		MEN	WOMEN
N° (average/annual)		204	202
RATES	Crude	17,3	17,2
	Age adj (EU27)	15,7	13,0
	Age adj (WORLD)	6,8	4,8
Sub-area comparisons			
Local Health Authorities (ASL)			
Age adj(EU27)	ASL TO1-2	19,5	13,7
	ASL TO3	15,5	11,5
	ASL TO4	19,9	13,1
	ASL TO5	14,9	12,7



SURVIVAL: 2008-2012 (f.u. 31/12/2015)		
	MEN	WOMEN
N° of cases	920	918
1 year observed	20,6%	24,3%
1 year relative	22,6%	26,2%
5 year observed	7,6%	6,4%
5 year relative	9,1%	7,6%
5 year standardized	9,9%	10,8%



PREVALENCE 31/12/2012		
N° of cases x 100.000		
	MEN	WOMEN
observed (2008-2012)	14,4	13,1
overall cohort estimation	19,2	19,9