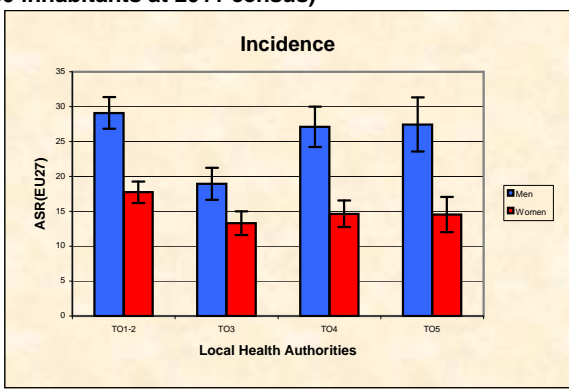
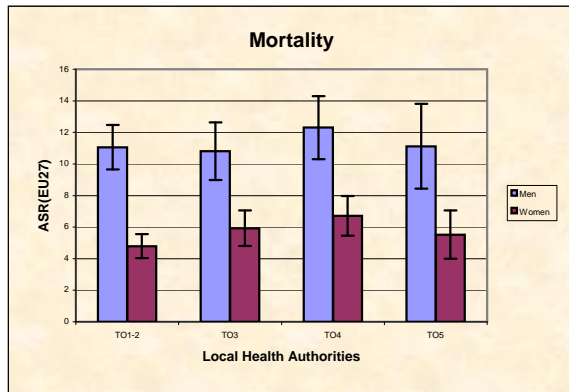


Piedmont Cancer Registry
Turin Metropolitan area (2-247-780 inhabitants at 2011 census)

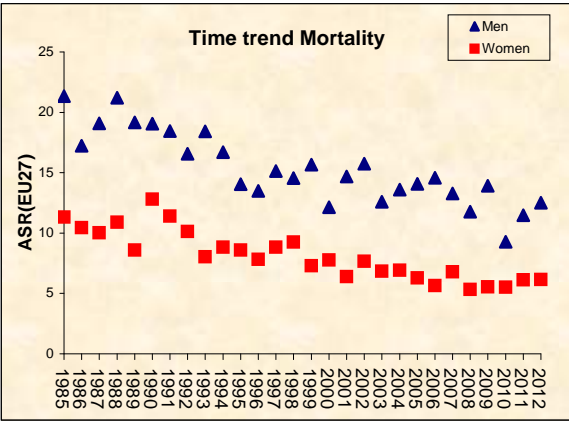
RECTUM - ICD-10: C 19-21	
COMMENTS:	
Incidence in men is higher than in women. While incidence is stable, mortality showed a decreasing trend. Some differences across areas within the Turin area can also be due to a lower adherence to screening activities. Survival at 5 years is above 65%	



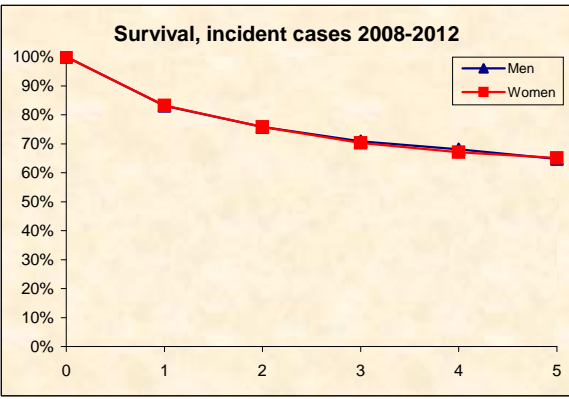
INCIDENCE Last Update: 2008-2012			
		MEN	WOMEN
N° (average/annual)		239	191
RATES	Crude	20,3	16,3
	Age adj (EU27)	18,5	13,1
	Age adj (WORLD)	7,8	6,0
Sub-area comparisons			
Local Health Authorities (ASL)			
Age adj(EU27)	ASL TO1-2	29,1	17,7
	ASL TO3	19,0	13,3
	ASL TO4	27,1	14,6
	ASL TO5	27,4	14,5



MORTALITY Last Update: 2008-2012			
		MEN	WOMEN
N° (average/annual)		122	87
RATES	Crude	10,3	7,4
	Age adj (EU27)	9,5	5,6
	Age adj (WORLD)	3,6	2,1
Sub-area comparisons			
Local Health Authorities (ASL)			
Age adj(EU27)	ASL TO1-2	11,1	4,8
	ASL TO3	10,8	5,9
	ASL TO4	12,3	6,7
	ASL TO5	11,1	5,5



SURVIVAL: 2008-2012 (f.u. 31/12/2015)		
	MEN	WOMEN
N° of cases	1450	1112
1 year observed	79,5%	79,9%
1 year relative	83,1%	83,2%
5 year observed	52,9%	56,2%
5 year relative	64,8%	65,1%
5 year standardized	65,6%	66,8%



PREVALENCE 31/12/2012		
N° of cases x 100.000		
	MEN	WOMEN
observed (2008-2012)	85,0	59,2
overall cohort estimation	211,8	157,5