

Piedmont Cancer Registry
Turin Metropolitan area (2-247-780 inhabitants at 2011 census)

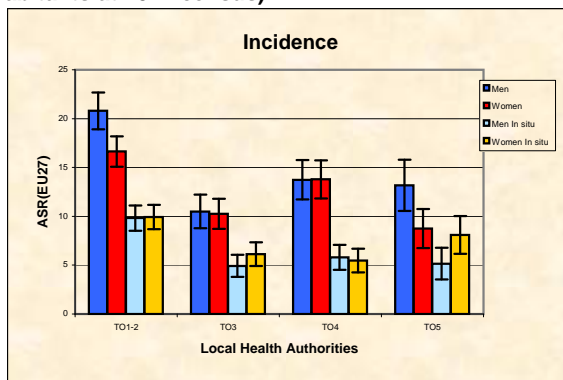
SKIN, MELANOMAS - ICD-10: C 43

COMMENTS:

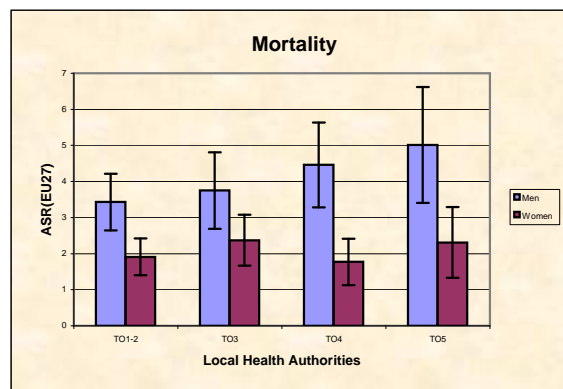
Melanoma, together with prostate cancer, has seen the most striking incidence increase in white populations in the second half of the last century. This increase has been obstinately counterbalanced by a constant stability of mortality rates, witnessing the substantial role of overdiagnosis rather than the presence of a true risk increase.

INCIDENCE Last Update: 2008-2012

		MEN		WOMEN	
		In situ	Invasive	In situ	Invasive
N°(average/annual)		77	175	94	173
RATES	Crude	6,56	14,86	7,98	14,7
	Age adj (EU27)	6,05	13,72	7,30	13,1
	Age adj (WORLD)	3,71	7,94	5,04	8,7
Sub-area comparisons					
Local Health Authorities (ASL)					
Age adj(EU27)	ASL TO1-2	9,82	20,8	9,9	16,6
	ASL TO3	4,93	10,5	6,1	10,3
	ASL TO4	5,79	13,7	5,5	13,8
	ASL TO5	5,16	13,2	8,1	8,8

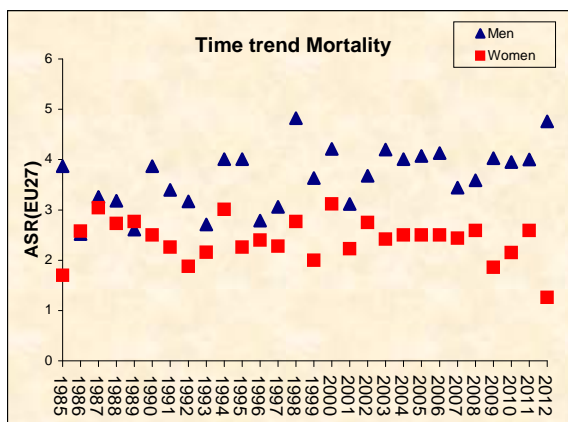


Mortality



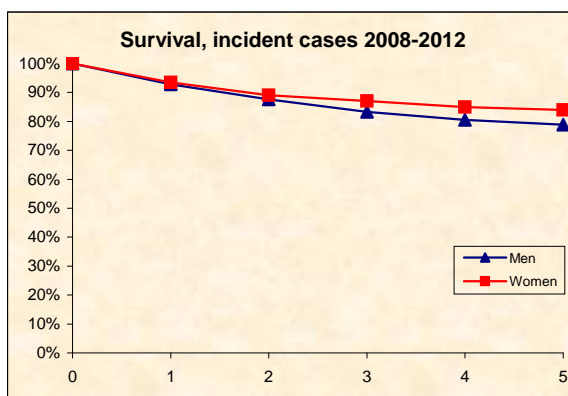
MORTALITY Last Update: 2008-2012

		MEN	WOMEN
N°(average/annual)		45	30
RATES	Crude	3,8	2,6
	Age adj (EU27)	3,4	2,0
	Age adj (WORLD)	1,6	0,9
Sub-area comparisons			
Local Health Authorities (ASL)			
Age adj(EU27)	ASL TO1-2	3,4	1,9
	ASL TO3	3,8	2,4
	ASL TO4	4,5	1,8
	ASL TO5	5,0	2,3



SURVIVAL: 2008-2012 (f.u. 31/12/2015)

		MEN	WOMEN
N°of cases		895	896
1 year observed		90,8%	92,1%
1 year relative		92,8%	93,5%
5 year observed		70,0%	77,3%
5 year relative		78,9%	83,9%
5 year standardized		77,2%	80,9%



PREVALENCE 31/12/2012

N° of cases x 100.000		MEN	WOMEN
observed (2008-2012)		68,3	67,0
overall cohort estimation		191,1	219,0