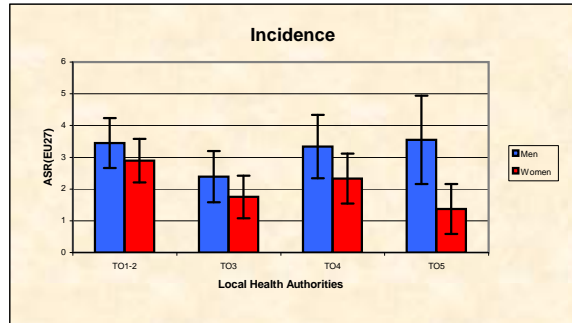


Piedmont Cancer Registry

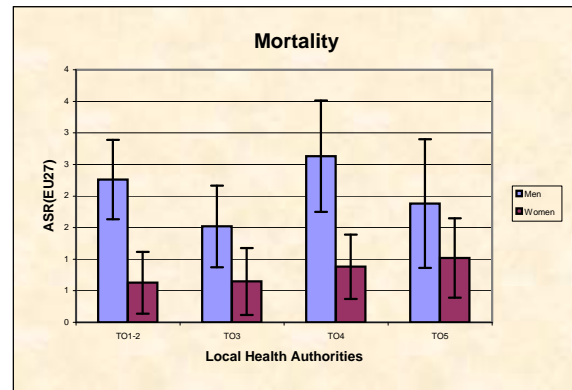
Turin Metropolitan area (2-247-780 inhabitants at 2011 census)

SOFT TISSUES - ICD-10: C 47, 49

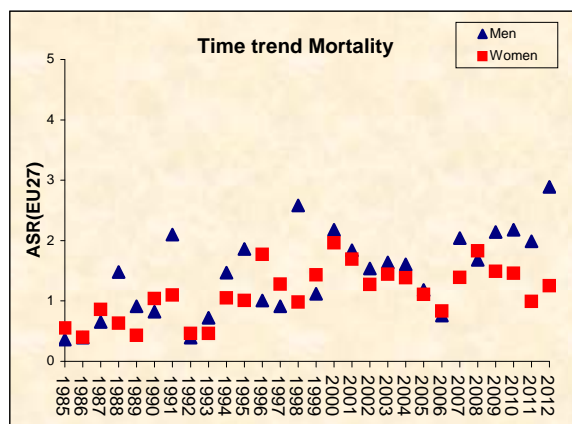
COMMENTS:
Soft tissue sarcomas are rare neoplasms. Observed geographical variations are within the expected fluctuations for such low rates. Survival at 5 years is above 50% and improving.



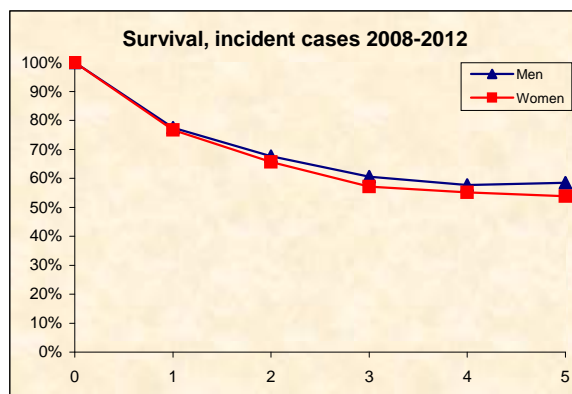
INCIDENCE Last Update: 2008-2012			
		MEN	WOMEN
N° (average/annual)		41	32
RATES	Crude	3,4	2,8
	Age adj (EU27)	3,2	2,5
	Age adj (WORLD)	2,0	1,9
Sub-area comparisons			
Local Health Authorities (ASL)			
Age adj (EU27)	ASL TO1-2	3,5	2,9
	ASL TO3	2,4	1,8
	ASL TO4	3,3	2,3
	ASL TO5	3,6	1,4



MORTALITY Last Update: 2008-2012			
		MEN	WOMEN
N° (average/annual)		24	20
RATES	Crude	2,0	1,7
	Age adj (EU27)	1,9	1,4
	Age adj (WORLD)	1,0	0,7
Sub-area comparisons			
Local Health Authorities (ASL)			
Age adj (EU27)	ASL TO1-2	2,3	1,7
	ASL TO3	1,5	1,2
	ASL TO4	2,6	1,1
	ASL TO5	1,9	0,9



SURVIVAL: 2008-2012 (f.u. 31/12/2015)			
		MEN	WOMEN
N° of cases		193	145
1 year observed		73,8%	74,5%
1 year relative		77,4%	76,7%
5 year observed		49,7%	49,9%
5 year relative		58,4%	53,9%
5 year standardized		59,4%	51,7%



PREVALENCE 31/12/2012			
N° of cases x 100.000			
		MEN	WOMEN
observed (2008-2012)		9,6	8,0
overall cohort estimation		36,3	27,8